

BILOXI, MISSISSIPPI

RNAV (GPS) RWY 22

APCH CRS	Rwy ldg	6630
217°	THRE	17
	Arprt Elev	33

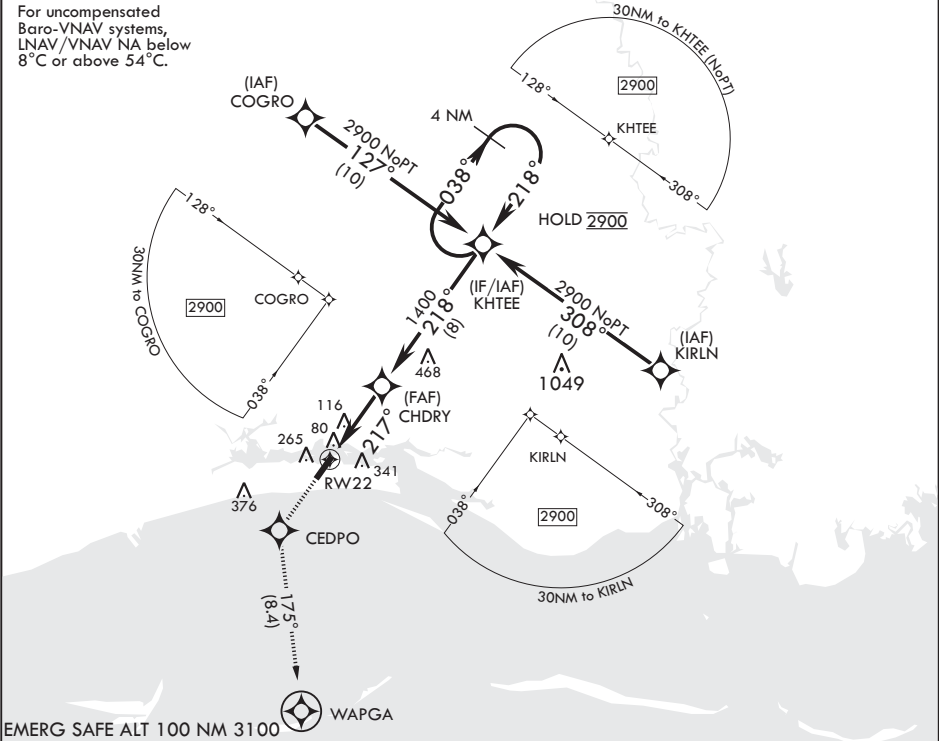
- (USAF)

KEESLER AFB (KBIX)

RNP APCH	ALSIF-1	MISSED APPROACH: Climb to 2200 direct CEDPO and track 175° to WAPGA. Expect ATC instructions.
▼ * When ALS inop, increase vis to 1 3/8 miles. ** When ALS inop, increase CAT AB RVR to 55, vis to 1 mile; CAT CD vis to 1 3/8 miles.		

ATIS★ 281.55	GULFPORT APP CON/DEP CON★ 124.6 354.1 130° - 309° 127.5 254.25 310° - 129°	TOWER★ 120.75 269.075	GND CON★ 121.8 275.8	CLNC DEL 121.8 275.8
-----------------	--	--------------------------	-------------------------	-------------------------

For uncompensated Baro-VNAV systems, LNAV/VNAV NA below 8°C or above 54°C.



2200	CEDPO	tr 175°	WAPGA	KHTEE	4 NM Holding Pattern	ELEV 33	THRE 17
						Rwy 4 ldg 6030' Rwy 22 ldg 6630'	
CATEGORY	A	B	C	D			
LNAV/VNAV DA*	520-1¼		503	(500-1¼)			
LNAV MDA**	520-40	503 (500-¾)	520-1¼	503 (500-1¼)			
CIRCLING	580-1 547 (600-1)	660-1 627 (700-1)	680-1¼ 647 (700-1¼)	680-2 647 (700-2)			

BILOXI, MISSISSIPPI

30°25'N - 88°55'W

KEESLER AFB (KBIX)

Amdt 2 21APR22

RNAV (GPS) RWY 22

SC-4, 07 AUG 2025 to 04 SEP 2025

SC-4, 07 AUG 2025 to 04 SEP 2025