

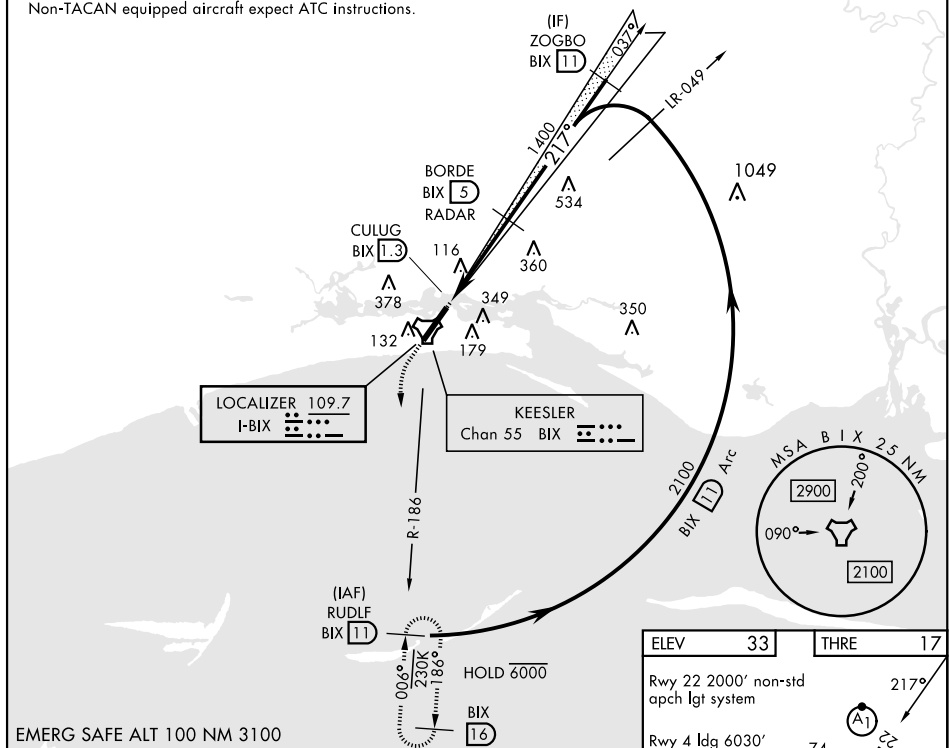


ILS or LOC RWY 22

LOC I-BIX 109.7	APCH CRS 217°	Rwy Idg THRE Arpt Elev 6630 17 33	[USAF]	KEESLER AFB (KBIX)
RADAR or DME required			ALSf-1	† MISSED APPROACH: Climb to 800 tracking 217°, upon reaching 800 turn left to intercept BIX TACAN R-186 climbing to 2200 to 11 DME (RUDf) and hold.
 * When ALS inop, increase CAT AB RVR to 55, vis to 1 mile, CAT CD vis to 1 1/2 miles.				
ATIS ★ 281.55	GULFPORT APP CON ★ 124.6 354.1 (130°- 309°) 127.5 254.25 (310°- 129°)		TOWER ★ 120.75 269.075	GND CON ★ 121.8 275.8 CLNC DEL 121.8 275.8

• 272

† Missed approach requires use of RNAV or ATC RADAR monitoring.
Non-TACAN equipped aircraft expect ATC instructions.



800
tr 217°
BIX R-186
RUDLF BIX 11

BORDE BIX 5
RADAR
1400
217°
2100
ZOGBO BIX 11

BIX TACAN
CULUG BIX 1.3
BIX 2.3
1400
GP 3.00°
TCH 53

0.5 3.7 NM

CATEGORY	A	B	C	D
S-ILS 22	217/40	200	(200-¾)	
S-LOC 22*	540/40 523 (600-¾)	540-1¼ 523 (600-1¼)		
CIRCLING	580-1 547 (600-1)	660-1 627 (700-1)	680-1¾ 647 (700-1¾)	680-2 647 (700-2)

FAF to MAP 3.7 NM

Knots	60	90	120	150	180
Min:Sec	3:42	2:28	1:51	1:29	1:14