


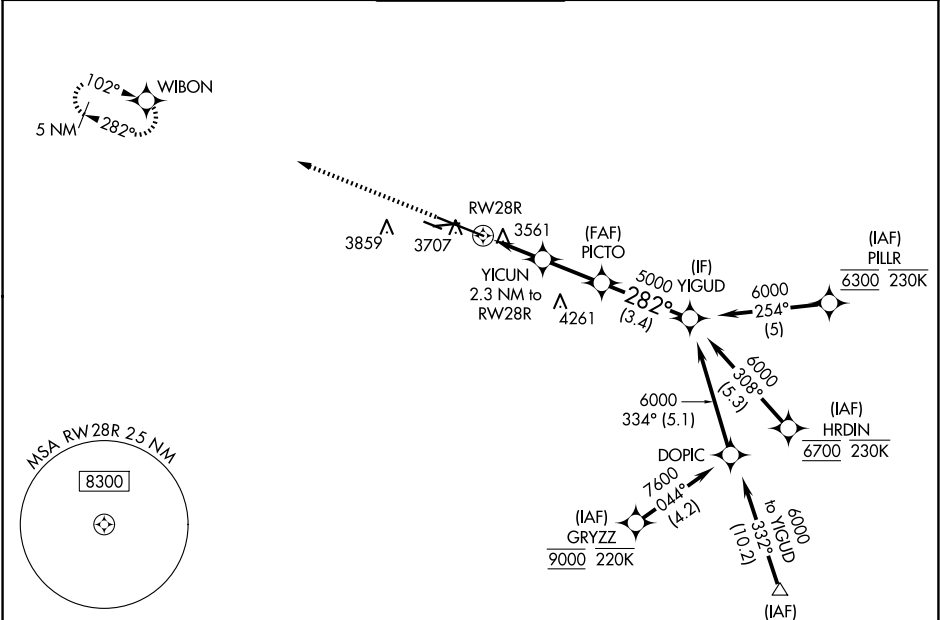
WAAS CH <b>56222</b> <b>W28A</b>	APP CRS <b>282°</b>	Rwy Idg <b>10518</b> TDZE <b>3517</b> Apt Elev <b>3662</b>
--	------------------------	--

RNAV (GPS) Y RWY 28R

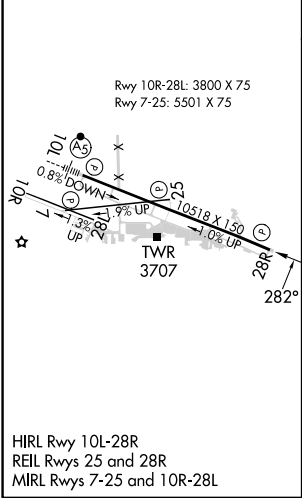
BILLINGS LOGAN INTL (BIL)

RNP APCH - GPS.		MISSED APPROACH: Climb to 5900 direct WIBON and hold.
	For uncompensated Baro-VNAV systems, LNAV/VNAV NA below -24°C or above 50°C.	

ATIS <b>126.3</b>	BILLINGS APP CON <b>120.5 284.6</b>	BILLINGS TOWER <b>127.2 257.8</b>	GND CON <b>121.9</b>	CLNC DEL <b>121.9</b>
----------------------	--	--------------------------------------	-------------------------	--------------------------



ELEV <b>3662</b>	<b>D</b>	TDZE <b>3517</b>
------------------	----------	------------------



5155				
5900 WIBON				
YICUN 2.3 NM to RW28R				
RW28R				
PICTO 5000				
YIGUD 6000				
GP 3.00° TCH 56				
0.9 NM 1.4 NM 2.3 NM 3.4 NM				
CATEGORY	A	B	C	D
LPV DA	3767-3/4 250 (200-3/4)			
LNAV/VNAV DA	3786-7/8 269 (200-7/8)			
LNAV MDA	3820-1 303 (200-1)			
CIRCLING	4160-1	498 (500-1)	4180-1 1/2 518 (600-1 1/2)	4580-3 918 (1000-3)