

APP CRS
282°

Rwy Idg
TDZE
Apt Elev

10518
3517
3662

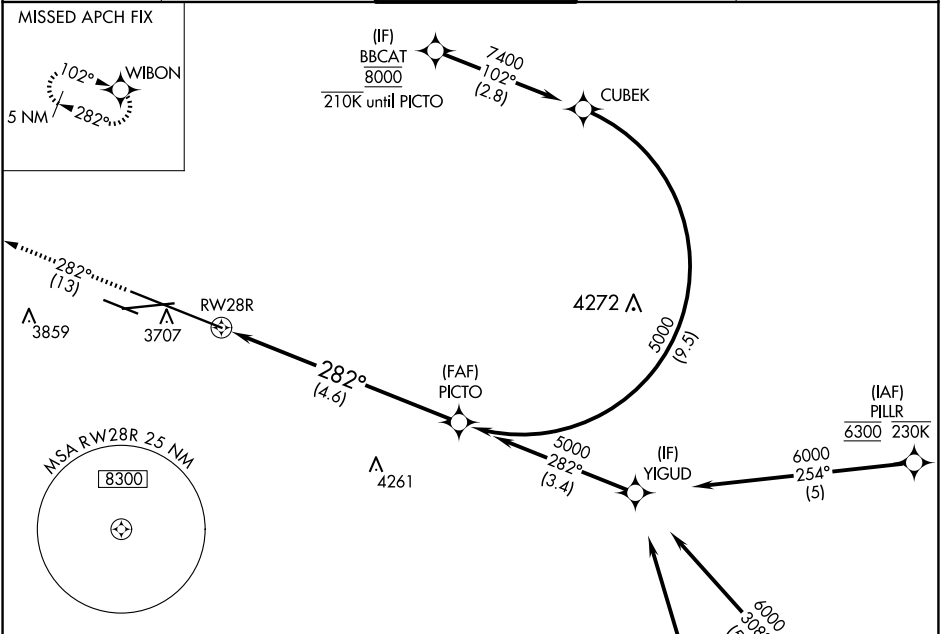
RNAV (RNP) Z RWY 28R
BILLINGS LOGAN INTL (BIL)

RNP AR APCH-GPS

For uncompensated Baro-VNAV systems, procedure NA below -24°C or above 50°C.

MISSED APPROACH: Climb to 5900 on track 282° to WIBON and hold.

ATIS 126.3	BILLINGS APP CON 120.5 284.6	BILLINGS TOWER 127.2 257.8	GND CON 121.9	CLNC DEL 121.9
----------------------	--	--------------------------------------	-------------------------	--------------------------



ELEV 3662 **D** TDZE 3517

Rwy 10R-28L: 3800 X 75
Rwy 7-25: 5501 X 75

10L
0.8% DOWN
1.3% UP
1.0% UP

50518 X 150
TWR 3707

282°

REIL Rwy 25 and 28R
HIRL Rwy 10L-28R
MIRL Rwy 7-25 and 10R-28L

5900
WIBON

282°

5000

4.6 NM

GP 3.00°
TCH 56

REIL Rwy 25 and 28R
HIRL Rwy 10L-28R
MIRL Rwy 7-25 and 10R-28L