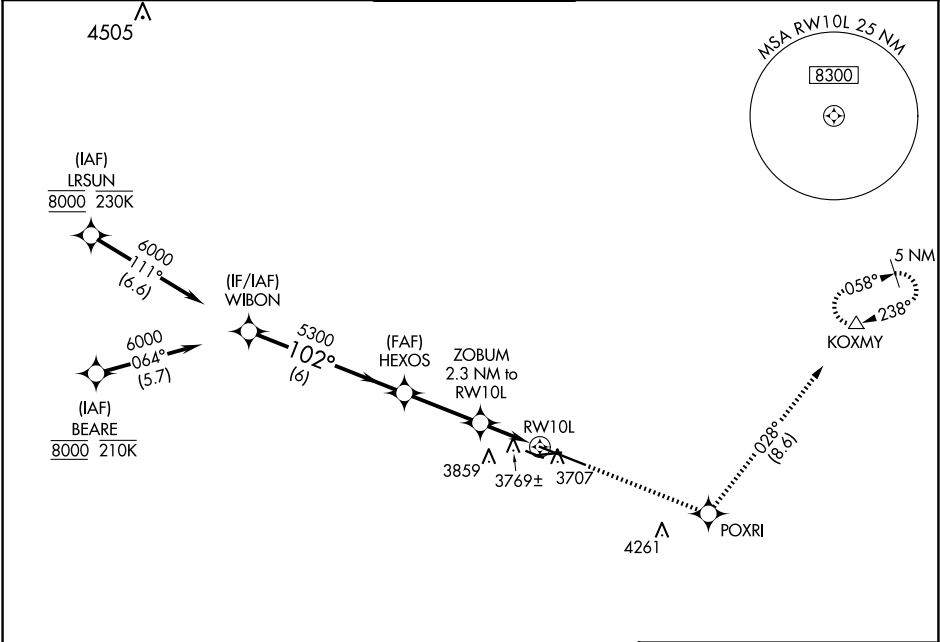


WAAS CH <b>50122</b> <b>W10A</b>	APP CRS <b>102°</b>	Rwy Idg <b>10518</b> TDZE <b>3585</b> Apt Elev <b>3662</b>
----------------------------------------	------------------------	------------------------------------------------------------------

RNAV (GPS) RWY 10L  
BILLINGS LOGAN INTL (BIL)

RNP APCH - GPS.	MALSR	MISSED APPROACH: Climb to 6000 direct POXR1 and on track 028° to KOXMY and hold.
For uncompensated Baro-VNAV systems, LNAV/VNAV NA below -24°C or above 50°C. #RVR 1800 authorized with use of FD or AP or HUD to DA.		

ATIS <b>126.3</b>	BILLINGS APP CON <b>120.5 284.6</b>	BILLINGS TOWER <b>127.2 257.8</b>	GND CON <b>121.9</b>	CLNC DEL <b>121.9</b>
----------------------	----------------------------------------	--------------------------------------	-------------------------	--------------------------



	WIBON	HEXOS	ZOBUM 2.3 NM to RWY 10L	POXR1	tr 028°	KOXMY
	6000	5300	4360			
	GP 3.00° TCH 51					
	6 NM	2.9 NM	1 NM	1.3 NM		
CATEGORY	A	B	C	D		
LPV DA#	3785/24 200 (200-½)					
LNAV/VNAV DA	4041/45 456 (400-¾)					
LNAV MDA	4020/24 435 (400-½)		4020/40 435 (400-¾)			
CIRCLING	4160-1 498 (500-1)		4180-1½ 518 (600-1½)		4580-3 918 (1000-3)	

