

LOC/DME I-BIL

111.5

Chan 52

APP CRS

102°

Rwy Idg

10518

TDZE

3585

Apt Elev

3662

ILS Y or LOC Y RWY 10L

BILLINGS LOGAN INTL (BIL)

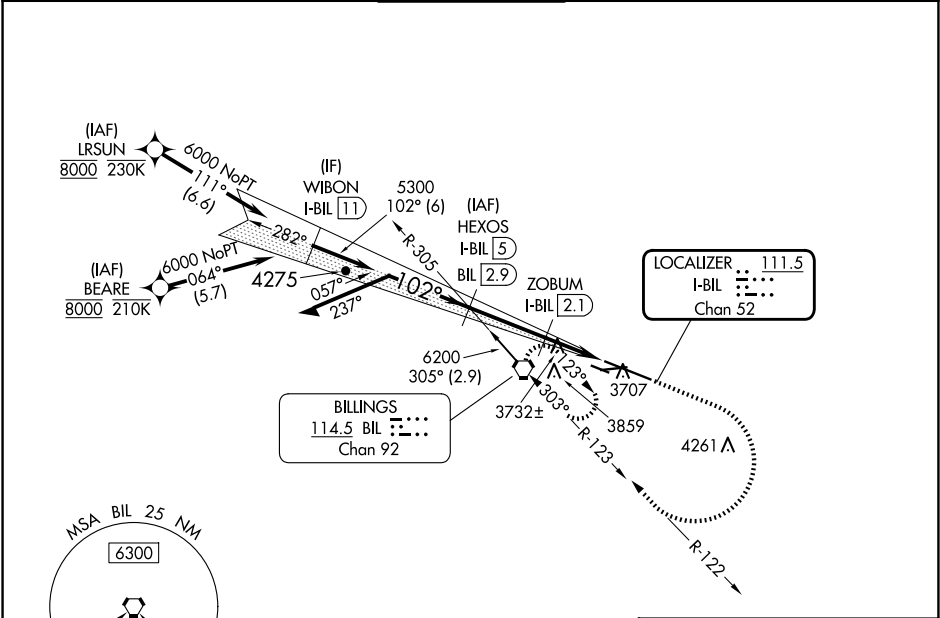
DME required.  
RNP APCH-GPS. From BEARE or LRSUN.

MALSR

MISSED APPROACH: Climb to 4500 then climbing right turn to 6000 on BIL VORTAC R-122 to BIL VORTAC and hold.

For inop ALS, increase S-LOC 10L Cat C/D visibility to RVR 6000.  
# RVR 1800 authorized with use of FD or AP or HUD to DA.

ATIS	BILLINGS APP CON	BILLINGS TOWER	GND CON	CLNC DEL
126.3	120.5 284.6	127.2 257.8	121.9	121.9



ELEV 3662

TDZE 3585

HEXOS I-BIL 5

ZOBUM I-BIL 2.1

I-BIL DME ANTENNA

I-BIL 0.2

5800

5300

4360

5300

4500

6000

BIL

Remain within 10 NM

GS 3.00° TCH 51

\*LOC only

\*I-BIL 1

2.9 NM

1.2 NM

1.1 NM

REIL Rwy 25 and 28R

HIRL Rwy 10L-28R

MIRL Rwy 7-25 and 10R-28L

FAF to MAP 5.2 NM

CATEGORY	A	B	C	D
S-ILS 10L #	3785/24 200 (200-½)			
S-LOC 10L	4000/24	415 (400-½)	4000/40	415 (400-¾)
CIRCLING	4160-1	498 (500-1)	4180-1½ 518 (600-½)	4580-3 918 (1000-3)

Knots

60 90 120 150 180

Min:Sec

5:12 3:28 2:36 2:05 1:44