

LOC/DME I-BMO 111.5 Chan 52	APP CRS 282°	Rwy Idg TDZE Apt Elev 10518 3517 3662
---	------------------------	---

ILS or LOC RWY 28R

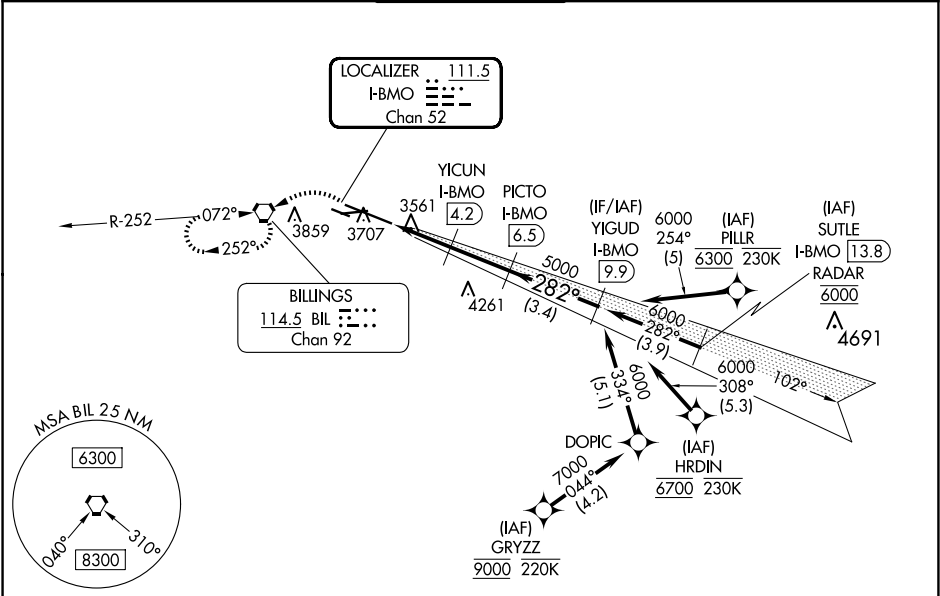
BILLINGS LOGAN INTL (BIL)

DME required.
Aircraft not GPS equipped - RADAR required for procedure entry.
RNP APCH-GPS. from GRYZZ or HRDIN or PILLR.

MISSED APPROACH: Climb to 4000 then climbing left turn to 6000 direct BIL VORTAC and hold, continue climb-in-hold to 6000.

Rwy 28R helicopter visibility reduction below ¾ SM NA.

ATIS 126.3	BILLINGS APP CON 120.5 284.6	BILLINGS TOWER 127.2 257.8	GND CON 121.9	CLNC DEL 121.9
----------------------	--	--------------------------------------	-------------------------	--------------------------



ELEV 3662 TDZE 3517

Rwy 10R-28L: 3800 X 75
Rwy 7-25: 5501 X 75

HIRL Rwy 10L-28R
REIL Rwy 25 and 28R
MIRL Rwy 7-25 and 10R-28L

4000	6000	BIL	PICTO I-BMO [6.5]	YIGUD I-BMO [9.9]
I-BMO [1.9]	I-BMO [2.8]	YICUN I-BMO [4.2]	5000	6000
0.9 NM	1.4 NM	2.3 NM	3.4 NM	GS 3.00° TCH 56
CATEGORY	A	B	C	D
S-ILS 28R	3767-¾ 250 (200-¾)			
S-LOC 28R	3840-1 323 (200-1)			
CIRCLING	4160-1 498 (500-1)	4180-1½ 518 (600-1½)		4580-3 918 (1000-3)