

WAAS CH 99418 W35A	APP CRS 355°	Rwy Idg 8803 TDZE 2563 Apt Elev 2573
--	------------------------	---

RNAV (GPS) RWY 35

BIG SPRING/MC MAHON-WRINKLE (BPG)

RNP APCH.

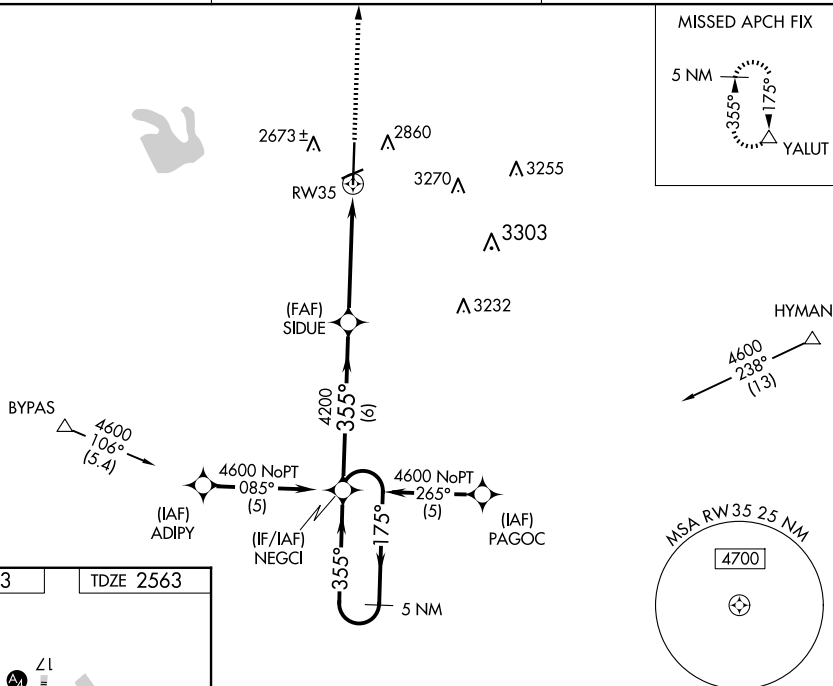
V Baro-VNAV NA when using Midland Intl Air and Space Port altimeter setting. For
A uncompensated Baro-VNAV systems, LNAV/VNAV NA below -20°C or above 43°C.
VDP NA with Midland Intl Air and Space Port altimeter setting. When local altimeter
setting not received, use Midland Intl Air and Space Port altimeter setting: increase all
DA 130 feet and all MDA 140 feet; increase LPV all Cats visibility $\frac{1}{4}$ SM, LNAV/VNAV
all Cats visibility $\frac{1}{2}$ SM and LNAV Cat C and D visibility $\frac{1}{2}$ SM.

MISSED APPROACH: Climb to 5200 direct YALUT and hold.

AWOS-3PT
118.025

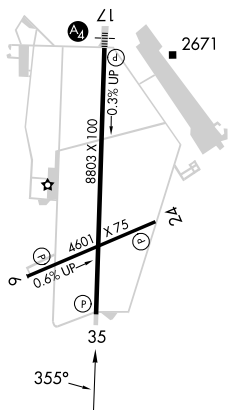
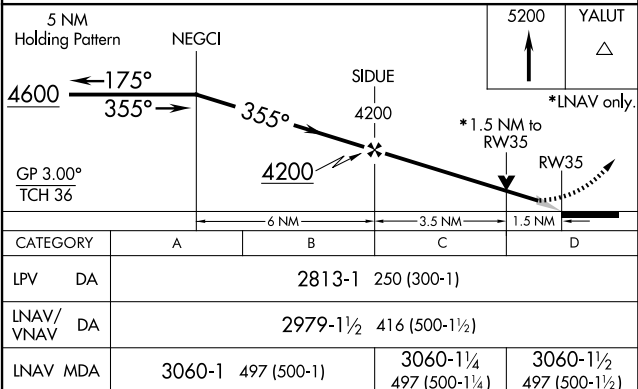
FORT WORTH CENTER
133.7 350.2

UNICOM
122.8 (CTAF) **L**



ELEV 2573

TDZE 2563

MIRL Rwy 6-24 and 17-35 **L**

BIG SPRING, TEXAS
Amdt 1A 07NOV19

BIG SPRING/MC MAHON-WRINKLE (BPG)

32°13' N-101°31' W

RNAV (GPS) RWY 35