

WAAS CH 45632 W24A	APP CRS 240°	Rwy Idg TDZE 2573 Apt Elev 2573
--	------------------------	---

RNAV (GPS) RWY 24

BIG SPRING/MC MAHON-WRINKLE (BPG)

RNP APCH.

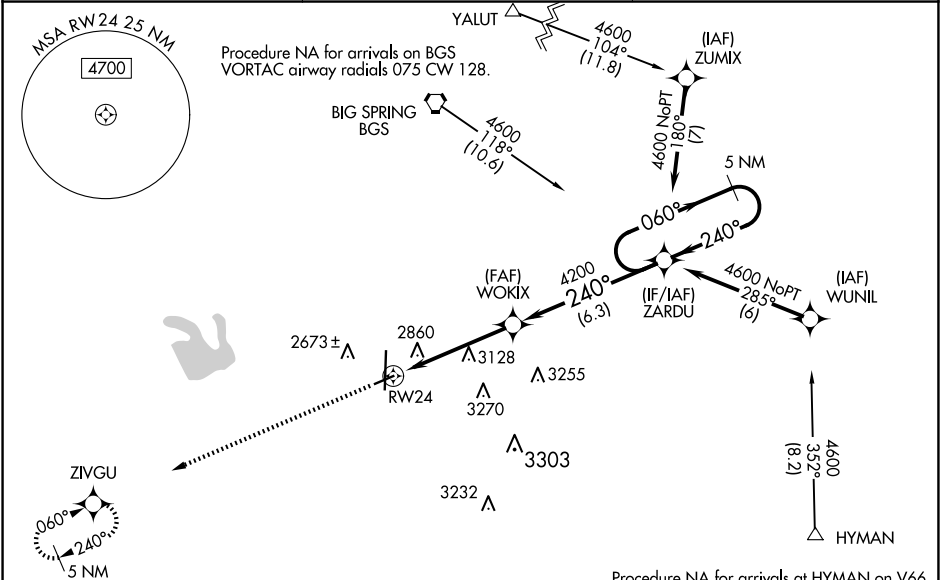
▼

▲

For uncompensated Baro-VNAV systems, LNAV/VNAV NA below -20°C or above 54°C. When local altimeter setting not received, use Midland Intl Air and Space Port altimeter setting: increase all DA 130 feet and all MDA 140 feet; increase LPV and LNAV/VNAV Cats A/B visibility ½ SM, and LNAV Cat A visibility ¼ SM. Baro-VNAV and VDP NA with Midland Intl Air and Space Port altimeter setting. Rwy 24 helicopter visibility reduction below ¾ SM NA.

MISSED APPROACH: Climb to 4600 direct ZIVGU and hold.

AWOS-3PT 118.025	FORT WORTH CENTER 133.7 350.2	UNICOM 122.8 (CTAF) 0
----------------------------	---	--



ELEV 2573

TDZE 2573

4600

ZIVGU

VGSI and RNAV glidepath not coincident (VGSI Angle 3.00/TCH 40).

*LNAV only.

2.1 NM to RWY24

2.9 NM

6.3 NM

WOKIX

ZARDU

5 NM Holding Pattern

060°

240°

4600

GP 3.00°

TCH 45

CATEGORY	A	B	C	D
LPV DA	2823-¾	250 (300-¾)	NA	
LNAV/VNAV DA	3236-2¼	663 (700-2¼)	NA	
LNAV MDA	3380-1 807 (900-1)	3380-1¼ 807 (900-1¼)	NA	

BIG SPRING, TEXAS

32°13'N-101°31'W

BIG SPRING/MC MAHON-WRINKLE (BPG)

RNAV (GPS) RWY 24

Orig-B 07NOV19