

WAAS CH 97618 W17A	APP CRS 175°	Rwy Idg 8803 TDZE 2562 Apt Elev 2573
--	------------------------	---

RNAV (GPS) RWY 17
BIG SPRING/MC MAHON-WRINKLE (BPG)

RNP APCH.

⚠ Inop table does not apply to LNAV/VNAV and LNAV Cat C. When local altimeter setting not received, use Midland Inlt Air and Space Port altimeter setting: increase all DA 130 feet and all MDA 140 feet; increase LPV and LNAV/VNAV all Cats and LNAV Cat C and D visibility ½ SM. Baro-VNAV NA when using Midland Inlt Air and Space Port altimeter setting. VDP NA with Midland Inlt Air and Space Port altimeter setting. For uncompensated Baro-VNAV systems, LNAV/VNAV NA below -20°C or above 43°C.

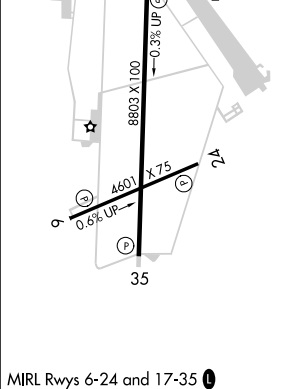
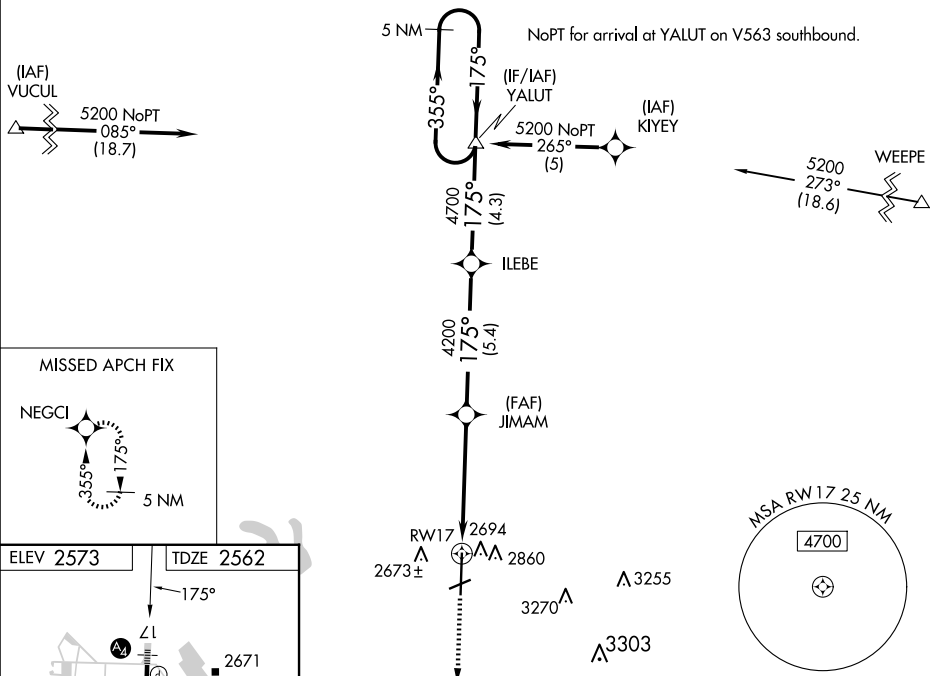
SSALS



MISSED APPROACH: Climb to 4600 direct NEGCI and hold.

AWOS-3PT
118.025

FORT WORTH CENTER
133.7 350.2

UNICOM
122.8 (CTAF) **L**

CATEGORY	A	B	C	D
LPV DA	2812-1 250 (300-1)			
RNAV/ VNAV DA	3040-1 $\frac{3}{4}$ 478 (500-1 $\frac{3}{4}$)			
RNAV MDA	3160- $\frac{3}{4}$ 598 (600- $\frac{3}{4}$)	3160-1 $\frac{1}{2}$ 598 (600-1 $\frac{1}{2}$)	3160-1 $\frac{3}{4}$ 598 (600-1 $\frac{3}{4}$)	