

TACAN SKE Chan <b>59</b> (112.2)	APP CRS <b>322°</b>	Rwy Ldg TDZE Apt Elev	<b>7822</b> <b>439</b> <b>459</b>
--	------------------------	-----------------------------	---

TACAN RWY 32L

SCOTT AFB/MIDAMERICA ST LOUIS (BLV)

ALSF-1

ⓘ

A1

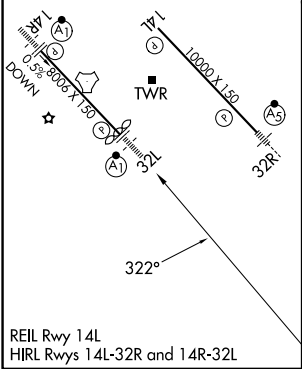
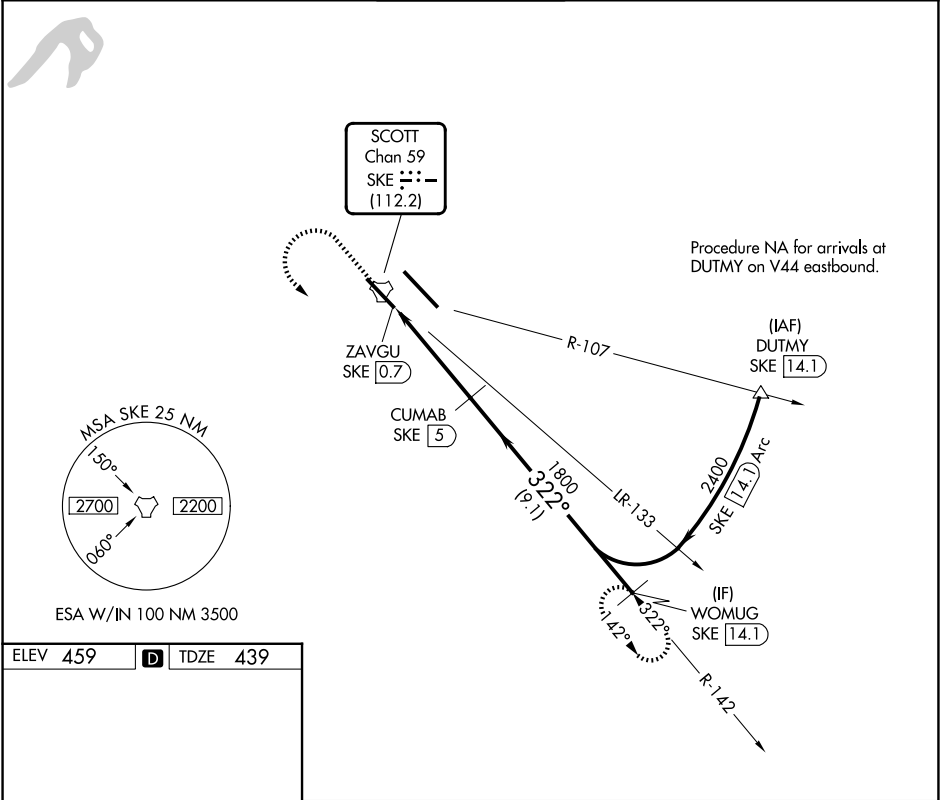
MISSED APPROACH: Climb to 1500 then climbing left turn to 2400 on SKE R-142 to WOMUG/14.1 DME and hold.

⚠

ASR

For inop ALS, increase S-32L Cat C/D/E visibility to 1½ SM.

ATIS ★ <b>128.7 256.7</b>	ST LOUIS APP CON <b>125.2 281.5</b>	SCOTT TOWER <b>128.25 253.5</b>	GND CON <b>119.2 275.8</b>	CLNC DEL <b>119.875 263.025</b>
------------------------------	--	------------------------------------	-------------------------------	------------------------------------



<div>1500 ↑</div>		<div>2400 SKE R-142</div>	<div>WOMUG SKE 14.1</div>		<div>VGSI and descent angles not coincident (VGSI Angle 3.00/TCH 50).</div>		<div>WOMUG SKE 14.1</div>
<div>ZAVGU SKE 0.7</div>		<div>SKE 2</div>	<div>CUMAB SKE 5</div>	<div>322°</div>			<div>2400</div>
<div>1.4 NM</div>		<div>3 NM</div>	<div>9.1 NM</div>				
CATEGORY	A	B	C	D	E		
S-32L	920/24	481 (500-½)	920/50	481 (500-1)	920/60 481 (500-1½)		
CIRCLING	1000-1 541 (600-1)	1120-1 661 (700-1)	1240-2¼ 781 (800-2¼)	1240-2½ 781 (800-2½)	1240-2¾ 781 (800-2¾)		

EC-3, 07 AUG 2025 to 04 SEP 2025

EC-3, 07 AUG 2025 to 04 SEP 2025