

LOC I-OKX 109.9	APP CRS 139°	Rwy Ldg 8006 TDZE 459 Apt Elev 459
---------------------------	------------------------	---

ILS or LOC RWY 14R
SCOTT AFB/MIDAMERICA ST LOUIS (BLV)

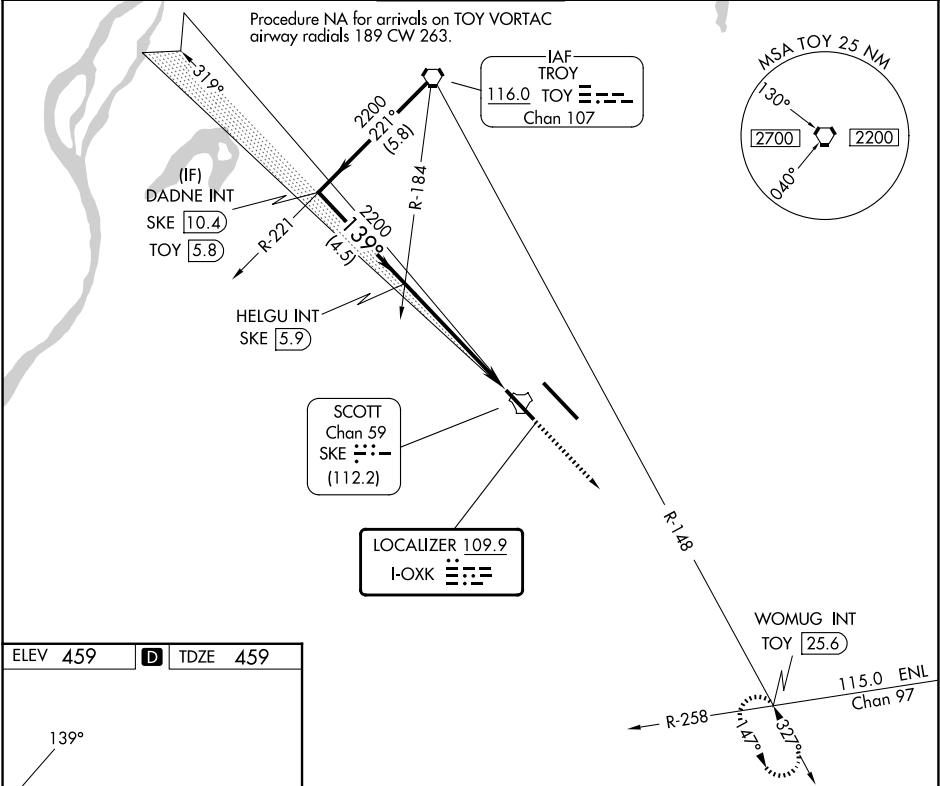
⚠ For inop ALS, increase S-ILS 14R Cat E visibility to RVR 4000 and S-LOC 14R Cat E visibility to 1 3/4 mile. DME from SKE TACAN. DME use requires simultaneous reception of I-OKX and SKE DME.

⚠ **ASR** * RVR 1800 authorized with use of FD or AP or HUD to DA.

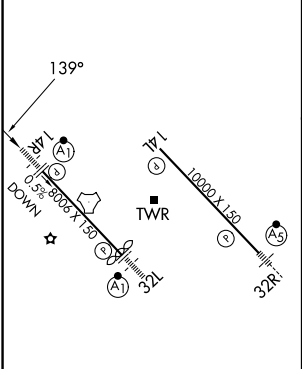
ALSF-1

MISSED APPROACH: Climb to 2200 then on TOY VORTAC R-148 to WOMUG INT/TOY 25.6 DME and hold.

ATIS ★ 128.7 256.7	ST LOUIS APP CON 125.2 281.5	SCOTT TOWER 128.25 253.5	GND CON 119.2 275.8	CLNC DEL 119.875 263.025
------------------------------	--	------------------------------------	-------------------------------	------------------------------------



ELEV 459	D	TDZE 459
----------	----------	----------



HIRL Rwy 14L-32R and 14R-32L REIL Rwy 14L					
FAF to MAP 5.3 NM					
Knots	60	90	120	150	180
Min:Sec	5:18	3:32	2:39	2:07	1:46

CATEGORY	DADNE INT SKE 10.4		HELGU INT SKE 5.9		2200	TOY R-148	WOMUG INT
	2200		2200		2200		
	GS 3.00° TCH 51		4.5 NM		5.3 NM		
	A	B	C	D	E		
	S-ILS 14R* 659/24 200 (200-1/2)						
S-LOC 14R 1040/24 581 (600-1/2)			1040-1 581 (600-1 1/4)				
CIRCLING	1040-1 581 (600-1)	1120-1 661 (700-1)	1240-2 781 (800-2 1/4)	1240-2 781 (800-2 1/2)	1240-3 781 (800-2 3/4)	SKE 0.6	

EC-3, 07 AUG 2025 to 04 SEP 2025

EC-3, 07 AUG 2025 to 04 SEP 2025