

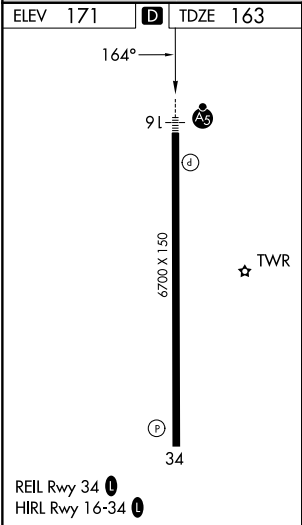
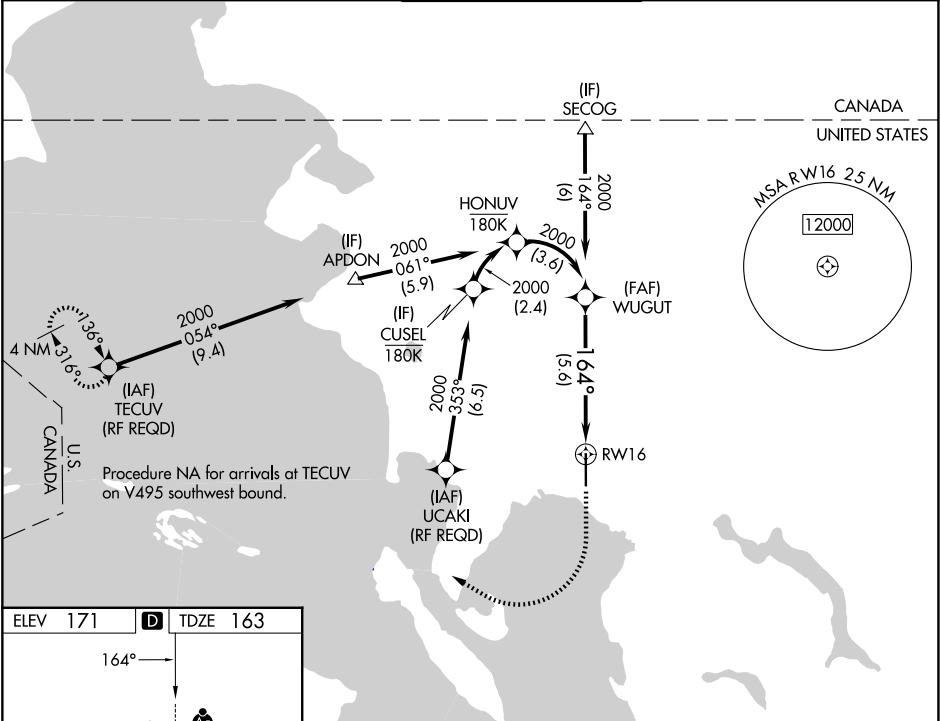
APP CRS	Rwy Ldg	6700
164°	TDZE	163
	Apt Elev	171



RNAV (RNP) Z RWY 16

BELLINGHAM INTL (BLI)

RNP AR APCH	MALSR	MISSED APPROACH: Climb to 700 then climbing right turn to 2000 direct TECUV and hold.
For uncompensated Baro-VNAV systems, procedure NA below -10°C or above 54°C. For inop ALS, increase RNP 0.27 all Cats visibility to RVR 4500, increase RNP 0.30 all Cats visibility to RVR 6000.		

ATIS 134.45	VICTORIA TERMINAL APP CON 132.7	BELLINGHAM TOWER★ 124.9 (CTAF) 0 379.3	GND CON 127.4 379.3	UNICOM 122.95
----------------	------------------------------------	---	------------------------	------------------



<div>WUGUT</div> <div>2000</div> <div>2000</div> <div>GP 3.00° TCH 51</div>				<div>700</div> <div>↑</div>	<div>2000</div> <div></div>	<div>TECUV</div> <div></div>
<div>164°</div> <div>See planview for multiple IF locations.</div> <div>5.6 NM</div> <div>RW16</div>						
CATEGORY	A	B	C	D		
RNP 0.27 DA	483/24			320 (400-½)		
RNP 0.30 DA	580/45			417 (500-¾)		
AUTHORIZATION REQUIRED						