

LOC/DME I-BLI
108.5
Chan **22**

APP CRS
164°

Rwy Ldg
TDZE **163**
Apt Elev **171**

ILS or LOC RWY 16

BELLINGHAM INTL (BLI)

DME or RADAR required.

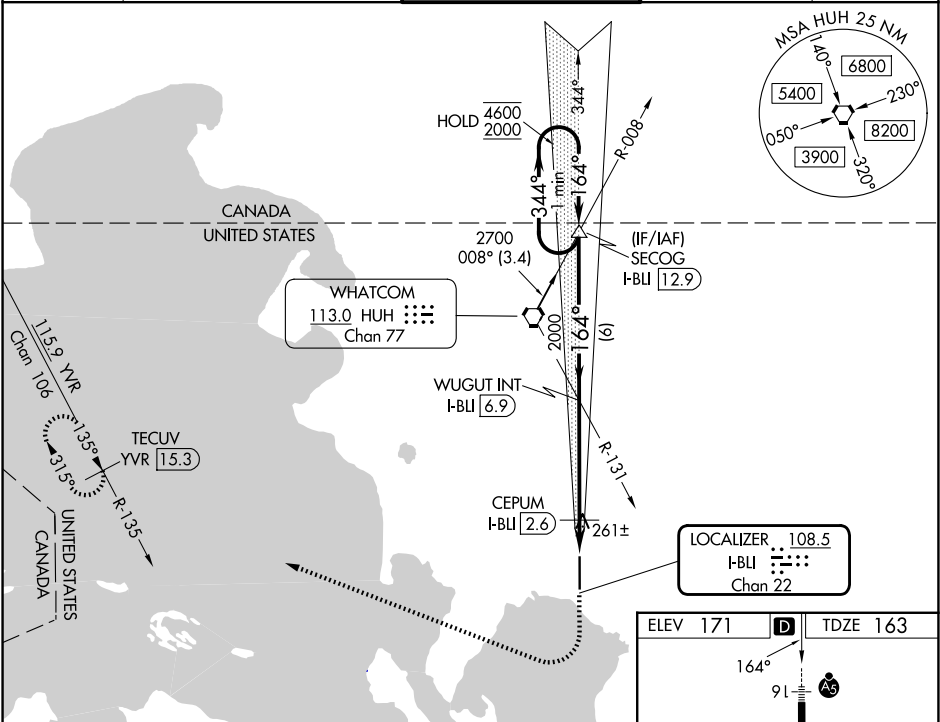
Autopilot coupled approach NA below 500. For inop ALS, increase S-LOC Cat C/D visibility to RVR 6000.

*RVR 1800 authorized with use of FD or AP or HUD to DA (NA when using FHR altimeter setting).

MALSR

MISSED APPROACH: Climb to 700 then climbing right turn to 3000 on heading 275° and on YVR VOR/DME R-135 to TECUV/YVR 15.3 DME and hold.

ATIS 134.45	VICTORIA TERMINAL APP CON 132.7	BELLINGHAM TOWER★ 124.9 (CTAF) 0 379.3	GND CON 127.4 379.3	UNICOM 122.95
-----------------------	---	---	-------------------------------	-------------------------



One Minute Holding Pattern

SECOG I-BLI 12.9

WUGUT INT I-BLI 6.9

700

3000

YVR R-135

TECUV YVR 15.3

CEPUM I-BLI 2.6

I-BLI 1.3

640

6 NM

4.3 NM

1.3 NM

GS 3.00°

TCH 51

CATEGORY	A	B	C	D
S-ILS 16*	363/24 200 (200-½)			
S-LOC 16	520/24 357 (400-½)		520/40 357 (400-¾)	
CIRCLING	640-1 469 (500-1)		900-2 1160-3 729 (800-2) 989 (1000-3)	

ELEV 171

TDZE 163

164°

91

AS

4

50

6700

TWR

REIL Rwy 34 0 34

HIRL Rwy 16-34 0

FAF to MAP 5.6 NM

Knots	60	90	120	150	180
Min:Sec	5:36	3:44	2:48	2:14	1:52