

LOC/DME I-BLI
108.5
Chan **22**

APP CRS
164°

Rwy Ldg
TDZE **163**
Apt Elev **171**

ILS RWY 16 (SA CAT I)
BELLINGHAM INTL (BLI)

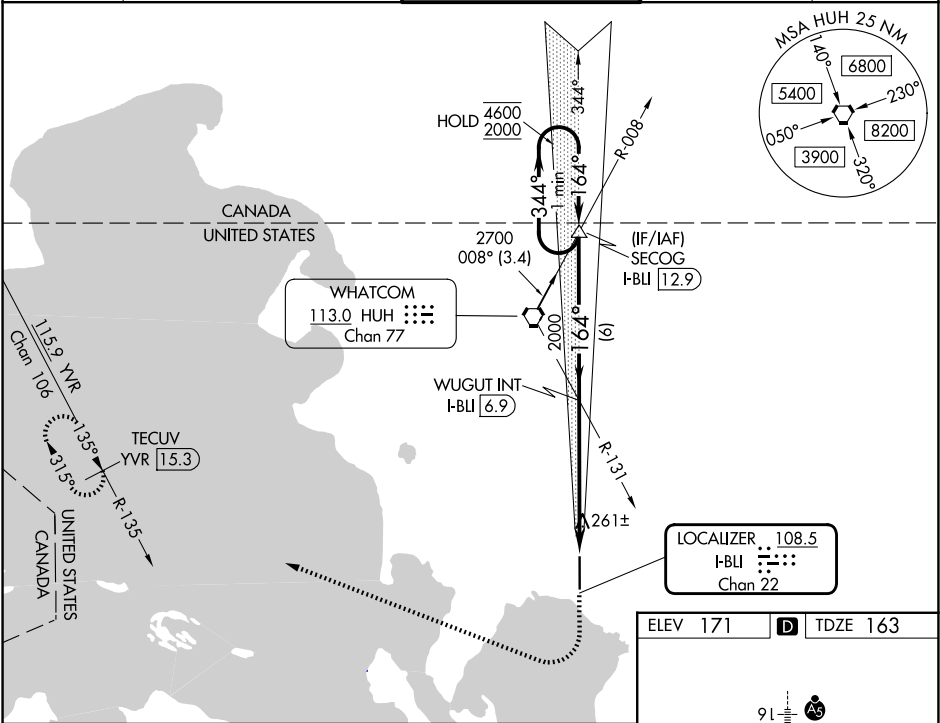
DME or RADAR required.

Requires specific OPSPEC, MSPEC or LOA approval.
Autopilot coupled approach NA below 500. Procedure
NA when tower closed.

MALSR

MISSED APPROACH: Climb to 700 then climbing
right turn to 3000 on heading 275° and on YVR
VOR/DME R-135 to TECUV/YVR 15.3 DME
and hold.

ATIS 134.45	VICTORIA TERMINAL APP CON 132.7	BELLINGHAM TOWER ★ 124.9 (CTAF) 0 379.3	GND CON 127.4 379.3	UNICOM 122.95
-----------------------	---	--	-------------------------------	-------------------------



One Minute
Holding Pattern

SECOG I-BLI **12.9**

WUGUT INT I-BLI **6.9**

YVR R-135

TECUV YVR **15.3**

4600
2000

344°
164°

164°
2000

GS 3.00°
TCH 51

6 NM

5.6 NM

1058'

CATEGORY

A

B

C

D

S-ILS 16

RA 244/14 150 DA 313

SA CATEGORY I ILS-SPECIAL AIRCREW
& AIRCRAFT CERTIFICATION REQUIRED

ELEV 171

TDZE 163

REIL Rwy 34

HIRL Rwy 16-34

91

6700 X 150

34

TWR