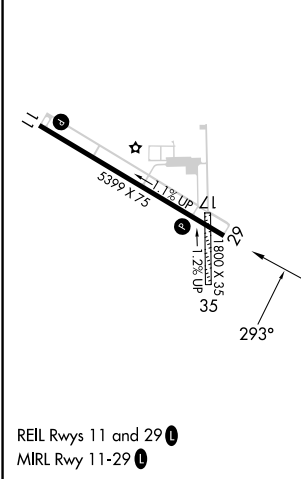
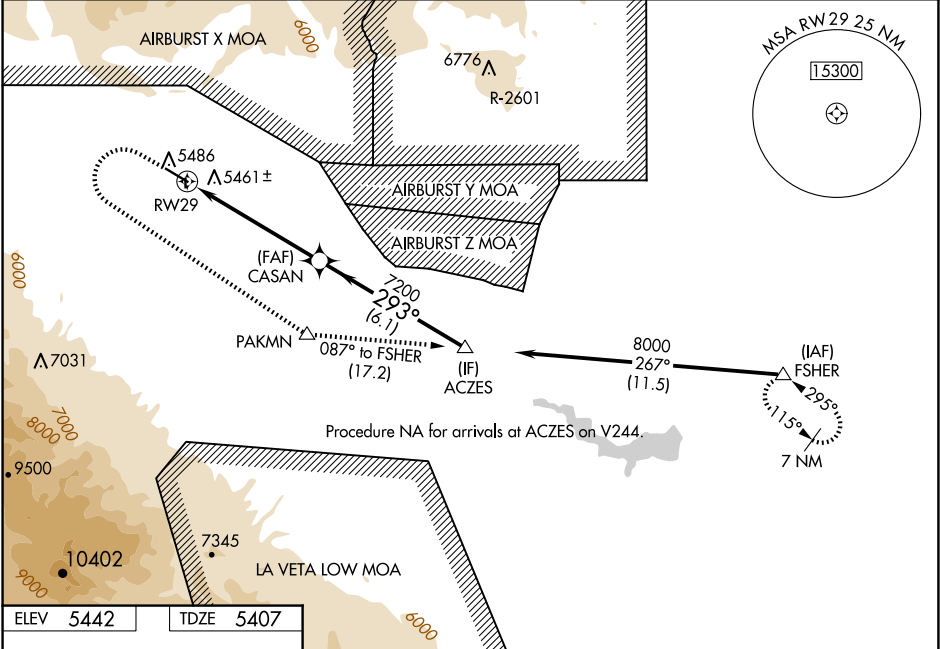


WAAS CH 69530 W29A	APP CRS 293°	Rwy Ldg TDZE Apt Elev	5399 5407 5442
--	------------------------	-----------------------------	---

RNAV (GPS) RWY 29
FREMONT COUNTY (1V6)

RNP APCH. ▼ For uncompensated Baro-VNAV systems, LNAV/VNAV NA below -25°C or above 54°C. Circling NA north of Rwy 11-29. Circling NA to Rwy 35.	MISSED APPROACH: (Do not exceed 210K until PAKMN) Climb to 5900 then climbing left turn to 8000 direct PAKMN and track 087° to FSHER and hold.
--	--

AWOS-3 120.025	DENVER APP CON ★ 120.1 290.5	UNICOM 122.8 (CTAF) 0
--------------------------	--	---------------------------------



5900	8000	PAKMN	tr 087°	FSHER	VGSI and RNAV glidepath not coincident (VGSI Angle 3.00/TCH 40).
↑	↶	△		△	
* LNAV only.					
* 0.9 NM to RW29					
RW29					
0.9 NM					
4.6 NM					
6.1 NM					
ACZES					
GP 3.00° TCH 55					
CATEGORY	A	B	C	D	
LPV DA	5657-¾	250 (300-¾)		NA	
LNAV/VNAV DA	5657-¾	250 (300-¾)		NA	
LNAV MDA	5720-1	313 (300-1)	5720-⅞ 313 (300-⅞)	NA	
CIRCLING	5800-1 358 (400-1)	5900-1 458 (500-1)	5980-1½ 538 (600-1½)	NA	