

WAAS CH 61220 W05A	APP CRS 047°	Rwy Ldg 10004 TDZE 952 Apt Elev 952
--	------------------------	--

RNAV (GPS) RWY 5L

BATTLE CREEK EXEC AT KELLOGG FLD (BTL)

RNP APCH - GPS.

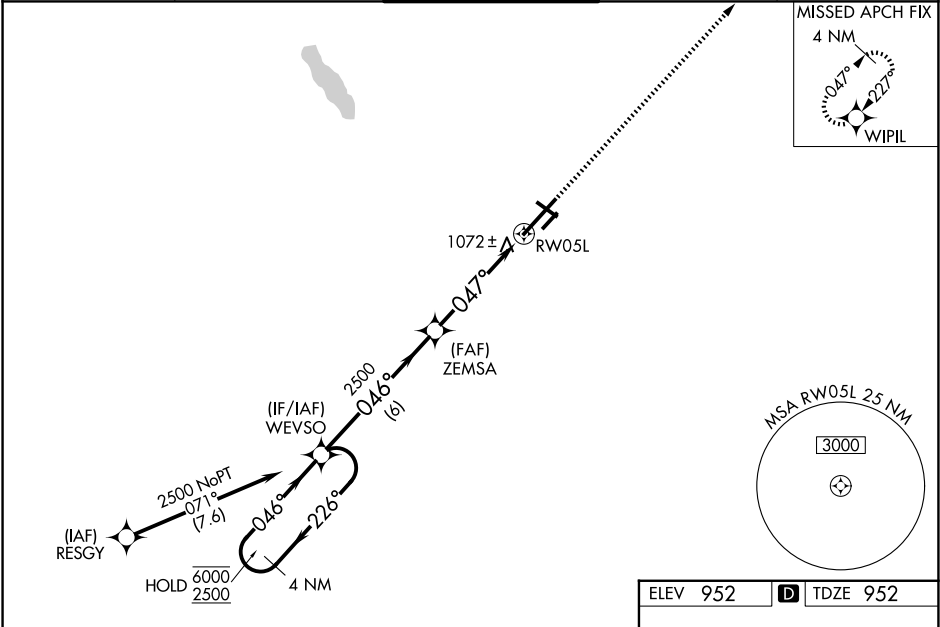
▼

⚠

For uncompensated Baro-VNAV systems, LNAV/VNAV NA below -16°C or above 54°C. Circling to Rwy 5R, 23L and 31 NA at night. When local altimeter setting not received, use Grand Rapids altimeter setting and increase LPV DA to 1425 feet and all visibilities $\frac{3}{8}$ SM; increase LNAV/VNAV DA to 1361 feet and all visibilities $\frac{1}{4}$ SM; increase all MDAs 120 feet and LNAV visibility Cat C and D $\frac{3}{8}$ SM and Circling visibility Cat C and D $\frac{1}{2}$ SM. VDP and Baro-VNAV NA when using Grand Rapids altimeter setting. Rwy 5L helicopter visibility reduction below $\frac{3}{4}$ SM NA.

MISSED APPROACH:
Climb to 2500 direct
WIPIL and hold.

ATIS 128.325	GREAT LAKES APP CON★ 119.2 239.25	BATTLE CREEK TOWER★ 126.825 (CTAF)	GND CON 121.7	UNICOM 122.95
------------------------	---	--	-------------------------	-------------------------



4 NM Holding Pattern		WEVSO	ZEMSA	2500	WIPIL
6000 2500		← 226° 046° →	2500	1.4 NM to RWY 5L	
GP 3.00° TCH 49			2500		
		6 NM	3.3 NM	1.4	
CATEGORY	A	B	C	D	
LPV DA		1317-1	365 (400-1)		
LNAV/VNAV DA		1253- $\frac{7}{8}$	301 (400- $\frac{7}{8}$)		
LNAV MDA	1440-1	488 (500-1)	1440- $1\frac{3}{8}$	488 (500- $1\frac{3}{8}$)	
CIRCLING	1440-1 488 (500-1)	1480-1 528 (600-1)	1520- $1\frac{1}{2}$ 568 (600- $1\frac{1}{2}$)	1520-2 568 (600-2)	

4835

4100

31

23L

5R

13

5L

0.4% DOWN

1000 X 150

1100 X 75

TWR

047°

HIRL Rwy 5L-23R
MIRL Rwy 13-31 and 5R-23L
REIL Rwy 5L, 5R, 13, 23L and 31