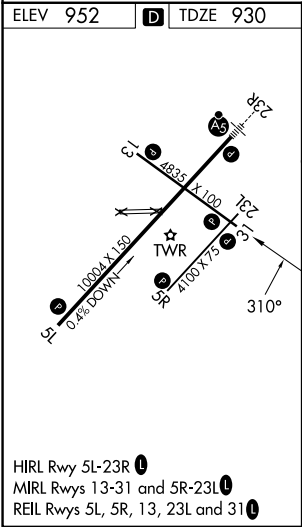
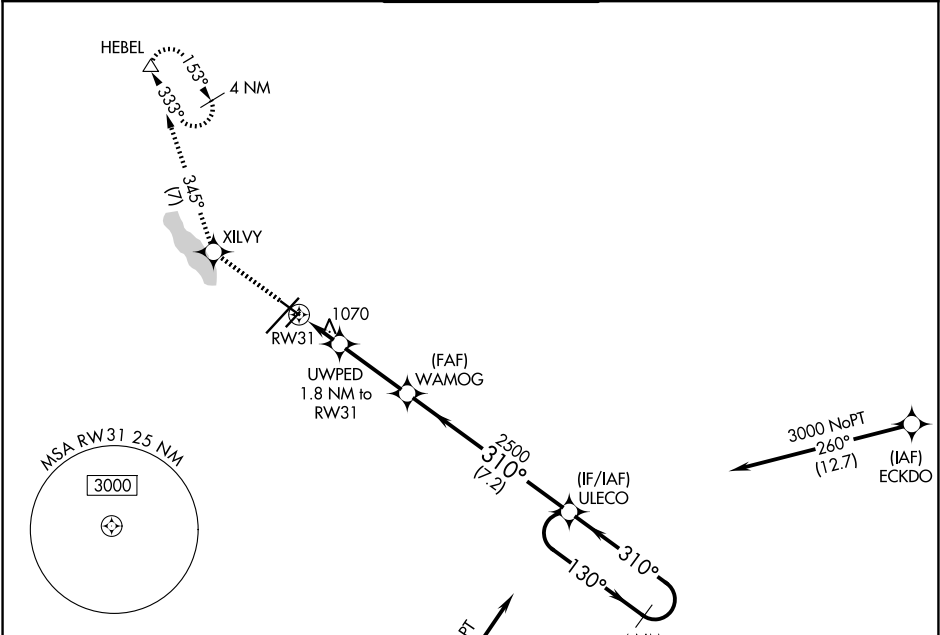


APP CRS	Rwy Ldg	4835
310°	TDZE	930
	Apt Elev	952

RNAV (GPS) RWY 31  
BATTLE CREEK EXEC AT KELLOGG FLD (BTL)

RNP APCH.	MISSED APPROACH: Climb to 3000 direct XILVY and on 345° track to HEBEL and hold.
Circling NA to Rwys 5R and 23L. Rwy 31 helicopter visibility reduction below 1 SM NA. Procedure NA at night.	

ATIS 128.325	GREAT LAKES APP CON★ 119.2 239.25	BATTLE CREEK TOWER★ 126.825 (CTAF)	GND CON 121.7	UNICOM 122.95
-----------------	--------------------------------------	---------------------------------------	------------------	------------------



<p>3000 No. 038° (15.1)</p> <p>(IAF) GEEBE</p> <p>4 NM</p>				
3000 ↑	XILVY 	tr 345°	HEBEL △	ULECO 4 NM Holding Pattern
<p>UWPED 1.8 NM to RW31</p> <p>WAMOG</p> <p>3.00 TCH 40</p> <p>310°</p> <p>1540</p> <p>2500</p> <p>1.8 NM 3 NM 7.2 NM</p> <p>130° → 3000</p> <p>← 310°</p> <p>VGSI and descent angles not coincident (VGSI Angle 3.00/TCH 25).</p>				
CATEGORY	A	B	C	D
LNAV MDA	1320-1	390 (400-1)	1320-1½	390 (400-1½)
CIRCLING	1420-1 468 (500-1)	1480-1 528 (600-1)	1520-1½ 568 (600-1½)	1520-2 568 (600-2)

EC-1, 07 AUG 2025 to 04 SEP 2025

EC-1, 07 AUG 2025 to 04 SEP 2025