


WAAS CH 56411 W23A	APP CRS 227°	Rwy Ldg 10004 TDZE 929 Apt Elev 952
--	------------------------	--

RNAV (GPS) RWY 23R

BATTLE CREEK EXEC AT KELLOGG FLD (BTL)

RNP APCH - GPS.

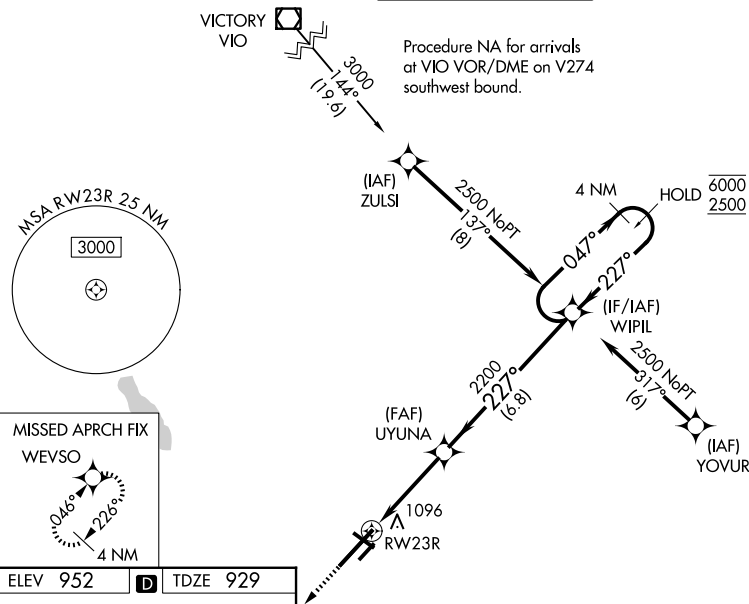
 For uncompensated Baro-VNAV systems, LNAV/VNAV NA below -20°C or above 54°C. Circling to Rwy 5R, 23L and 31 NA at night. When local altimeter setting not received, use Grand Rapids altimeter setting: increase all LPV DA to 1236 feet and LNAV/VNAV DA to 1365 feet and visibility to RVR 5000 all Cats; increase all MDA 120 feet, LNAV Cats C and D visibility to 1¼ SM and Circling Cat C visibility to 2 SM and Cat D visibility to 2¼ SM. For inop ALS when using Grand Rapids altimeter setting, increase LPV all Cats visibility to RVR 5000 and LNAV Cats C and D to visibility 1¼ SM. Baro-VNAV and VDP NA when using Grand Rapids altimeter setting. *RVR 1800 authorized with use of FD or AP or HUD to DA.

MALSR

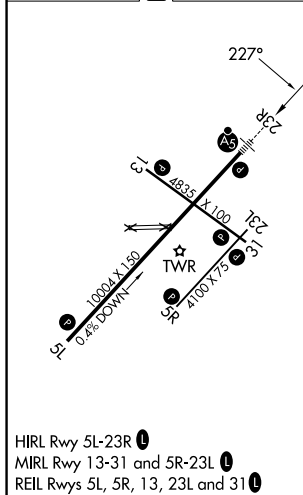


MISSED APPROACH:
Climb to 2500 direct
WEVSO and hold.

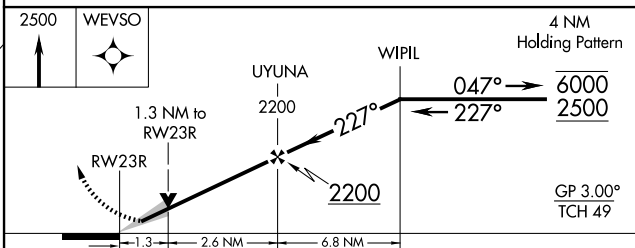
ATIS 128.325	GREAT LAKES APP CON★ 119.2 239.25	BATTLE CREEK TOWER★ 126.825 (CTAF)	GND CON 121.7	UNICOM 122.95
-----------------	--------------------------------------	---------------------------------------	------------------	------------------



ELEV 952	D	TDZE 929
----------	----------	----------



HIRL Rwy 5L-23R **L**
MIRL Rwy 13-31 and 5R-23L **L**
REIL Rwys 5L, 5R, 13, 23L and 31 **L**



CATEGORY	A	B	C	D
LPV DA *	1129/24 200 (200-½)			
LNAV/ VNAV DA	1258/32 329 (400-⅝)			
LNAV MDA	1380/24 451 (500-½)	1380/45 451 (500-⅞)		
CIRCLING	1420-1 468 (500-1)	1480-1 528 (600-1)	1520-1½ 568 (600-1½)	1520-2 568 (600-2)