


WAAS CH 86225 W22A	APP CRS 224°	Rwy Ldg 7500 TDZE 70 Apt Elev 70
--	------------------------	---

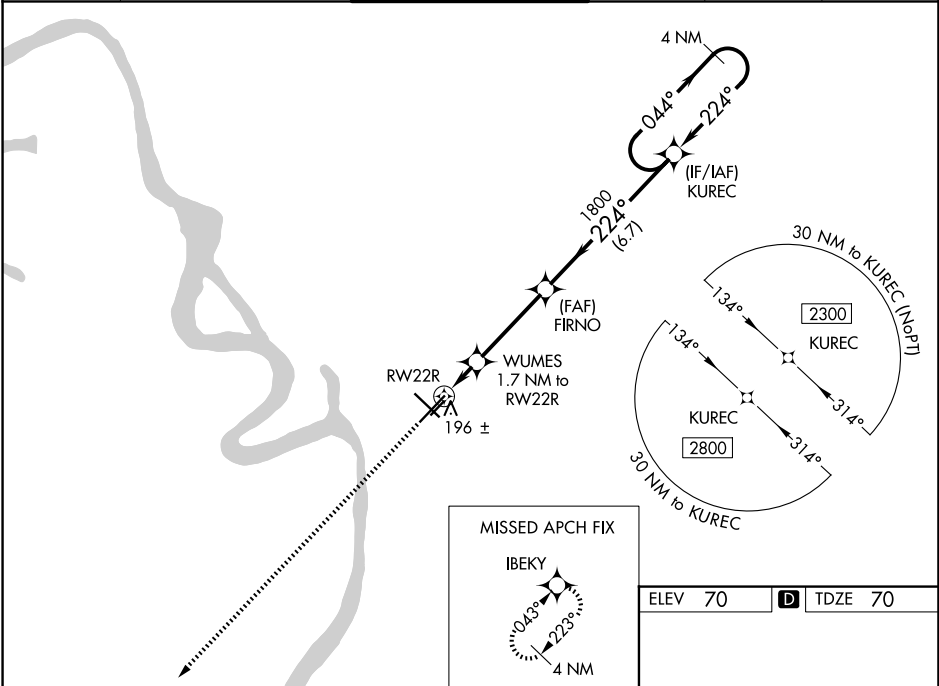
RNAV (GPS) RWY 22R
BATON ROUGE METRO, RYAN FLD (BTR)



⚠ Baro-VNAV NA when using Hammond altimeter setting. For uncompensated Baro-VNAV systems, LNAV/VNAV NA below -5°C (23°F) or above 54°C (130°F). DME/DME RNP-0.3 NA. VDP NA with Hammond altimeter setting. When local altimeter setting not received, use Hammond altimeter setting and increase all DA 91 feet, and all MDA 100 feet; increase LNAV/VNAV all Cats visibility 3⁄8 mile, LNAV Cat C/D visibility to RVR 5000, and Circling Cat C/D visibility 1⁄4 mile. For inop MALSR when using Hammond altimeter setting, increase LPV all Cats visibility to RVR 4500, and LNAV C/D visibility to 1⁄8 mile.

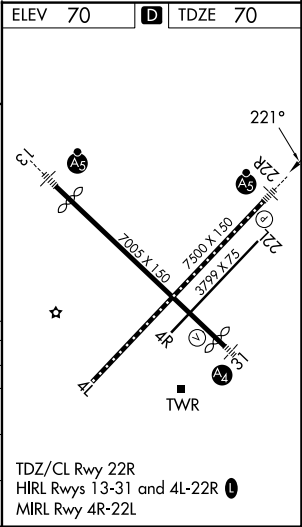
MALSR


MISSED APPROACH:
Climb to 2800 direct IBEKY and hold.

ATIS 125.2	BATON ROUGE APP CON ★ 120.3 278.3	RYAN TOWER ★ 118.45 (CTAF) 0 257.8	GND CON 121.9	CLNC DEL 119.4	UNICOM 122.95
----------------------	---	--	-------------------------	--------------------------	-------------------------



 				
*LNAV only.	WUMES	FIRNO	KUREC	4 NM Holding Pattern
*1.1 NM to RW22R	1.7 NM to RW22R	1800	2300	
		1800	GP 3.00° TCH 55	
	1.1	0.6	3.6 NM	6.7 NM
CATEGORY	A	B	C	D
LPV DA	270/18		200 (200-½)	
LNAV/VNAV DA	486/45		416 (500-¾)	
LNAV MDA	460/24	390 (400-½)	460/35	390 (400-¾)
CIRCLING	560-1 490 (500-1)	660-1 590 (600-1)	780-2 710 (800-2)	840-2½ 770 (800-2½)



SC-4, 07 AUG 2025 to 04 SEP 2025

SC-4, 07 AUG 2025 to 04 SEP 2025