

LOC/DME I-CLZ	APP CRS	Rwy Ldg
108.7	223°	7500
Chan 24		TDZE 70
		Apt Elev 70

ILS or LOC/DME RWY 22R

BATON ROUGE METRO, RYAN FLD (BTR)

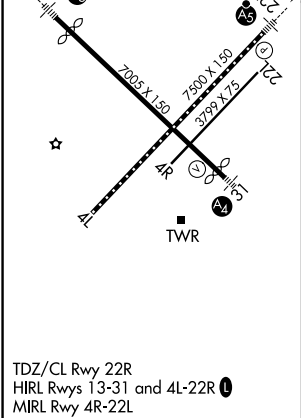
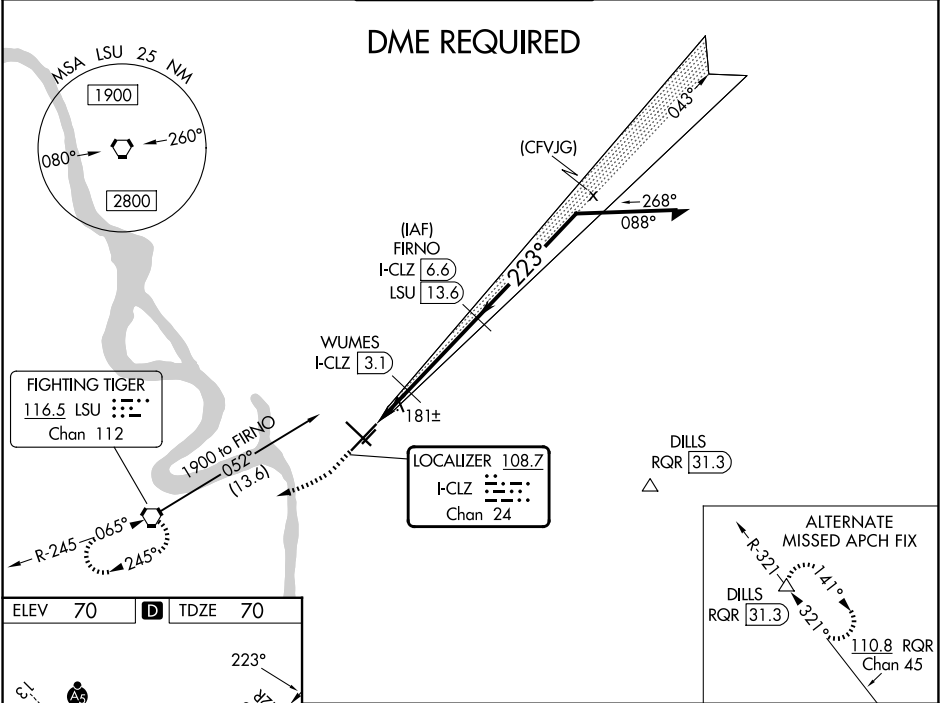
⚠ When local altimeter setting not received, use Hammond altimeter setting and increase all DA 91 feet and all MDA 100 feet; increase S-ILS 22R all Cats visibility to RVR 2200; increase S-LOC 22R Cat C/D visibility to RVR 5000. For inop MALSRS when using Hammond altimeter setting, increase S-ILS 22R all Cats visibility to RVR 4500, and S-LOC 22R Cat C/D visibility to 1½ mile. For inop MALSRS, increase S-LOC 22R Cat C/D visibility to RVR 5500. VDP NA with Hammond altimeter setting.

MALSRS

A5

MISSED APPROACH:
Climb to 600 then climbing right turn to 2000 direct LSU VORTAC and hold.

ATIS	BATON ROUGE APP CON ★	RYAN TOWER ★	GND CON	CLNC DEL	UNICOM
125.2	120.3 278.3	118.45 (CTAF) 0 257.8	121.9	119.4	122.95



	600	2000	LSU
	↑	↷	⬡
*LOC only.			
	FIRNO I-CLZ 6.6		
	1800 043°		
	Remain within 10 NM		
	1900		
	WUMES I-CLZ 3.1		
	*660		
	1800		
	GS 3.00° TCH 55		
	1 NM 0.7 NM 3.6 NM		
CATEGORY	A	B	C
S-ILS 22R	270/18 200 (200-½)		
S-LOC 22R	440/24	370 (400-½)	440/35 370 (400-¾)
CIRCLING	560-1 490 (500-1)	660-1 590 (600-1)	780-2 710 (800-2) 840-2½ 770 (800-2½)