

LOC/DME I-BTR	APP CRS	Rwy Ldg
<b>110.3</b>	<b>133°</b>	<b>5720</b>
Chan <b>40</b>		TDZE <b>67</b>
		Apt Elev <b>70</b>

ILS or LOC RWY 13

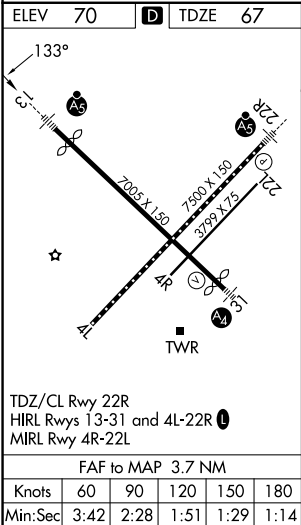
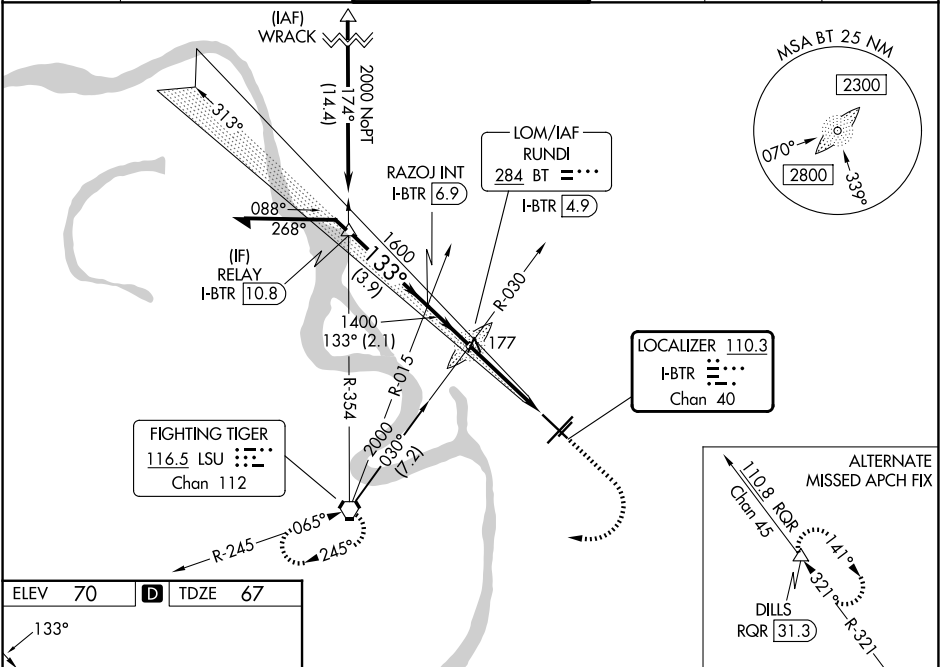
BATON ROUGE METRO, RYAN FLD (BTR)

**T** For inop MALSR when using Hammond altimeter setting, increase S-ILS 13 all Cats visibility to ¾ mile, and S-LOC 13 visibility to 1¾ mile. VDP NA with Hammond altimeter setting. When local altimeter setting not received, use Hammond altimeter setting and increase all DA 91 feet and all MDA 100 feet, increase S-LOC 13 Cats C and D visibility ¼ mile, increase Circling Cats C and D visibility ¼ mile. For inop MALSR, increase S-LOC 13 Cats C and D to 1¾ mile.



**MISSED APPROACH:**  
Climb to 700 then climbing right turn to 2000 direct LSU VORTAC and hold.

ATIS <b>125.2</b>	BATON ROUGE APP CON ★ <b>120.3 278.3</b>	RYAN TOWER ★ <b>118.45 (CTAF) 257.8</b>	GND CON <b>121.9</b>	CLNC DEL <b>119.4</b>	UNICOM <b>122.95</b>
----------------------	---	--	-------------------------	--------------------------	-------------------------



RUNDI LOM/INT I-BTR 4.9				
Remain within 10 NM				
313°				
2000				
1600				
1321				
133°				
1400				
GS 3.00° TCH 57				
2.1 NM 2.7 NM 1 NM				
*I-BTR 2.2				
I-BTR 1.1				
*LOC only. Use I-BTR DME when on the localizer course.				
CATEGORY	A	B	C	D
S-ILS 13	267-½ 200 (200-½)			
S-LOC 13	480-½	413 (500-½)	480-¾	413 (500-¾)
CIRCLING	560-1 490 (500-1)	660-1 590 (600-1)	780-2 710 (800-2)	840-2½ 770 (800-2½)