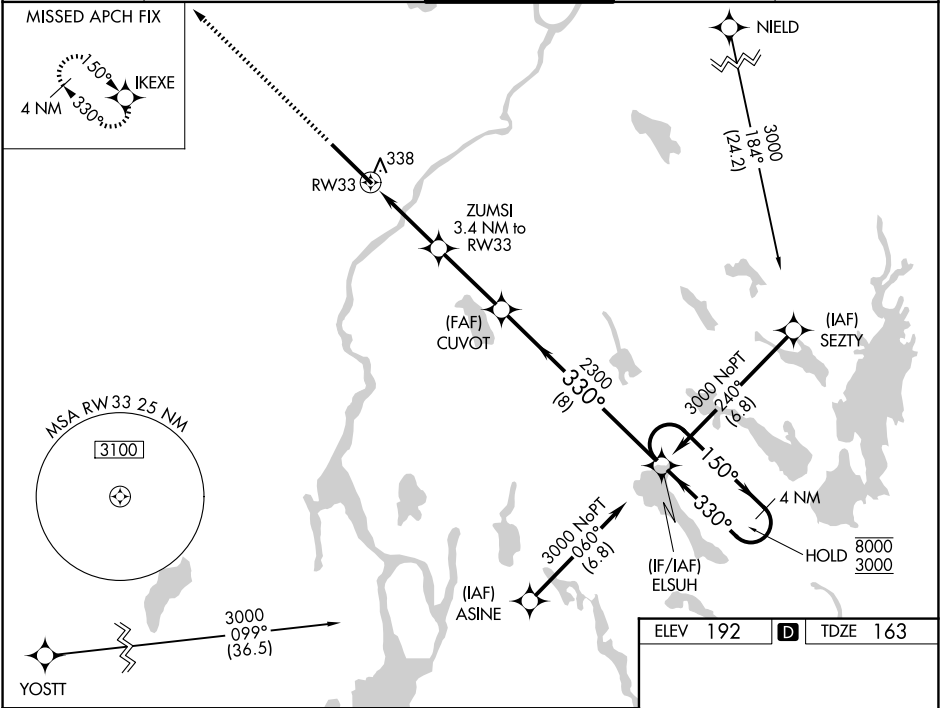


WAAS CH 78007 W33A	APP CRS 330°	Rwy Ldg 11440 TDZE 163 Apt Elev 192
--	------------------------	--

RNAV (GPS) RWY 33
BANGOR INTL (BGR)

RNP APCH:	<p>⚠ Circling NA northeast of Rwy 15 and 33. For uncompensated Baro-VNAV systems, LNAV/VNAV NA below -18°C or above 54°C. For inop ALS, increase LPV Cat E visibility to RVR 4000, LNAV/VNAV Cat E visibility to RVR 5500, and LNAV Cat E visibility to 1¼ SM. **RVR 1800 authorized with use of FD or AP or HUD to DA.</p>	MALSR 	MISSED APPROACH: Climb to 3000 direct IKEXE and hold.
-----------	---	-----------	--

ATIS 127.75	BANGOR APP CON 118.925 239.3	BANGOR TOWER 120.7 233.7	GND CON 121.9 348.6	CLNC DEL 135.9 348.6
-----------------------	--	------------------------------------	-------------------------------	--------------------------------



3000	IKEXE				
*LNAV only.		ZUMSI 3.4 NM to RW33	CUVOT 2300	ELSUH 4 NM Holding Pattern	
		*1.2 NM to RW33		150° → 8000 ← 330° 3000	
		RW33			GP 3.00° TCH 57
		*1300	2300		
		1.2	2.2 NM	3.1 NM	8 NM
CATEGORY	A	B	C	D	E
LPV DA**	363/24 200 (200-½)				
LNAV/VNAV DA	519/30 356 (400-¾)				
LNAV MDA	600/24	437 (500-½)	600/40	437 (500-¾)	
CIRCLING	640-1 448 (500-1)	720-1 528 (600-1)	740-1½ 548 (600-1½)	820-2 628 (700-2)	880-2½ 688 (700-2½)

