


BANGOR, MAINE

AL-39 (FAA)

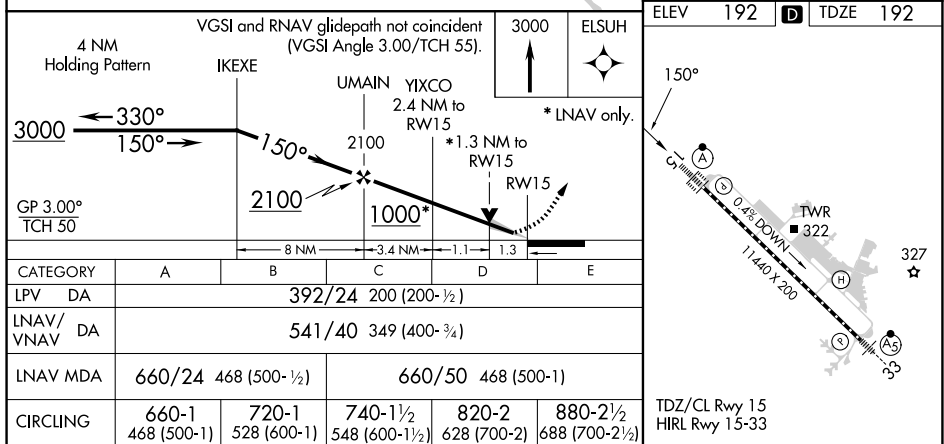
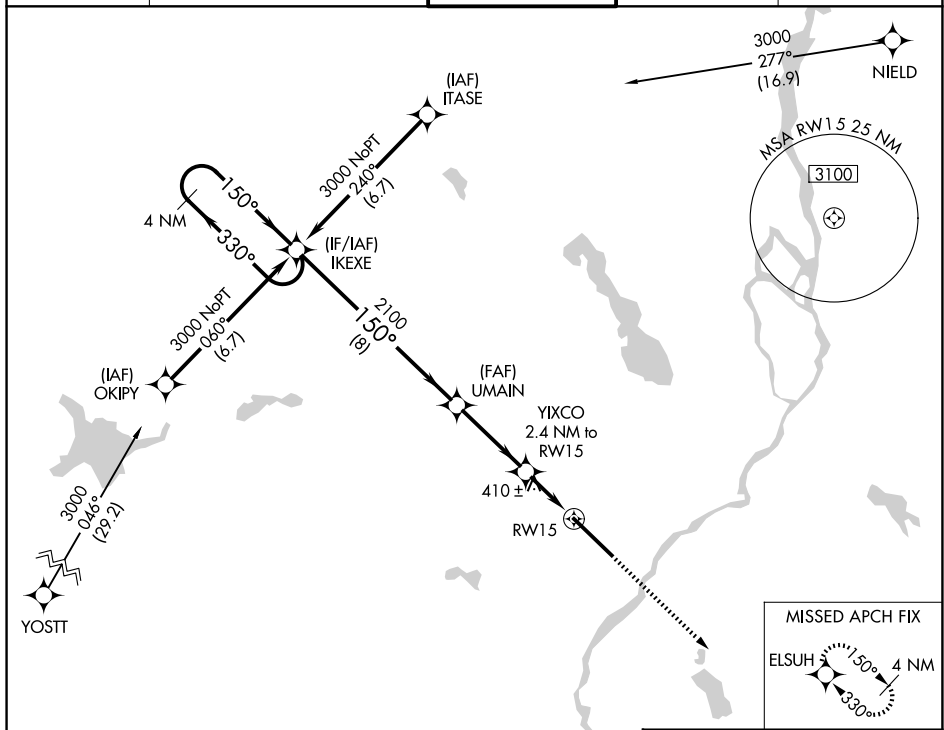
25219

WAAS CH 82307 W15A	APP CRS 150°	Rwy Ldg 11440 TDZE 192 Apt Elev 192
--	------------------------	--

RNAV (GPS) RWY 15
BANGOR INTL (BGR)


 For uncompensated Baro-VNAV systems, LNAV/VNAV NA below -19°C (-2°F) or above 54°C (130°F). DME/DME RNP-0.3 NA. For inoperative ALS, increase LPV Cat E visibility to RVR 4000, LNAV/VNAV all Cts visibility to RVR 6000, and LNAV Cts C/D/E visibility to 1% SM. Circling NA NE of Rwy 15-33.

ATIS 127.75	BANGOR APP CON 118.925 239.3	BANGOR TOWER 120.7 233.7	GND CON 121.9 348.6	CLNC DEL 135.9 348.6
----------------	---------------------------------	-----------------------------	------------------------	-------------------------



BANGOR, MAINE
Amdt 1 27APR17

44°48'N-68°50'W

BANGOR INTL (BGR)
RNAV (GPS) RWY 15

NE-1, 07 AUG 2025 to 04 SEP 2025