

BANGOR, MAINE

AL-39 (FAA)

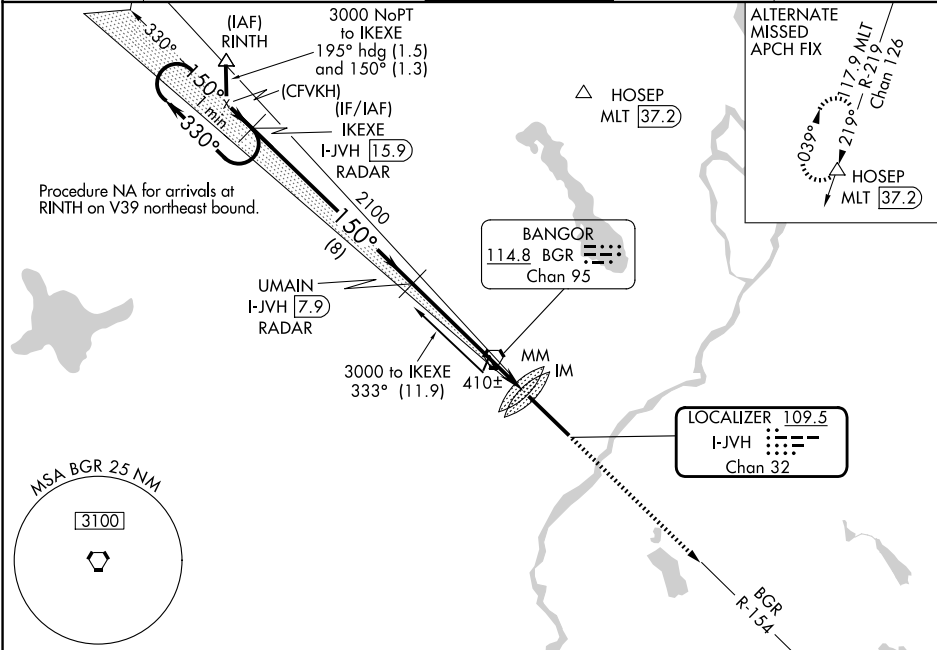
25219

LOC/DME I-JVH	APP CRS	Rwy Ldg	11440
109.5	150°	TDZE	192
Chan 32		Apt Elev	192

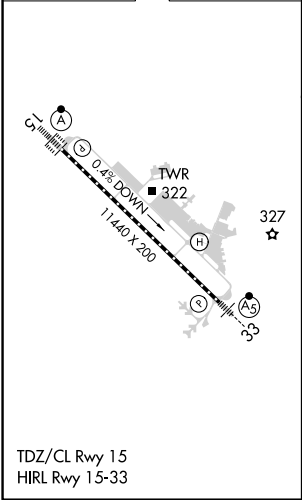
ILS Y RWY 15 (CAT II & III)  
BANGOR INTL (BGR)

ALSIF-2	MISSED APPROACH: Climb to 3000 on heading 150° and BGR VORTAC R-154 to ELSUH/BGR 18.3 DME/RADAR and hold.
ASR	DME or RADAR required.

ATIS	BANGOR APP CON	BANGOR TOWER	GND CON	CLNC DEL
127.75	118.925 239.3	120.7 233.7	121.9 348.6	135.9 348.6



ELEV 192	D	TDZE 192
----------	---	----------



DME or RADAR REQUIRED

VGSI and ILS glidepath not coincident (VGSI Angle 3.00/TCH 55).			
One Minute Holding Pattern	IKEXE I-JVH 15.9 RADAR	UMAIN I-JVH 7.9 RADAR	ELSUH BGR 18.3 RADAR
3000	330°	150°	150°
GS 3.00° TCH 50	2100	2100	2100
8 NM	5.8 NM	10.90 NM	
CATEGORY	A	B	C
S-ILS 15	CAT II	RA 113/12	100 DA 292
S-ILS 15	CAT III	RVR 06	
CATEGORY II & III ILS - SPECIAL AIRCREW & AIRCRAFT CERTIFICATION REQUIRED			

BANGOR, MAINE  
Amdt 7 27APR17

44°48'N-68°50'W

BANGOR INTL (BGR)  
ILS Y RWY 15 (CAT II & III)

NE-1, 07 AUG 2025 to 04 SEP 2025

NE-1, 07 AUG 2025 to 04 SEP 2025