

TACAN RWY 3

TACAN COF Chan 97	APCH CRS 020°	Rwy ldg TDZE Arpt Elev	9008 5 8
----------------------	------------------	------------------------------	----------------

[USAF]

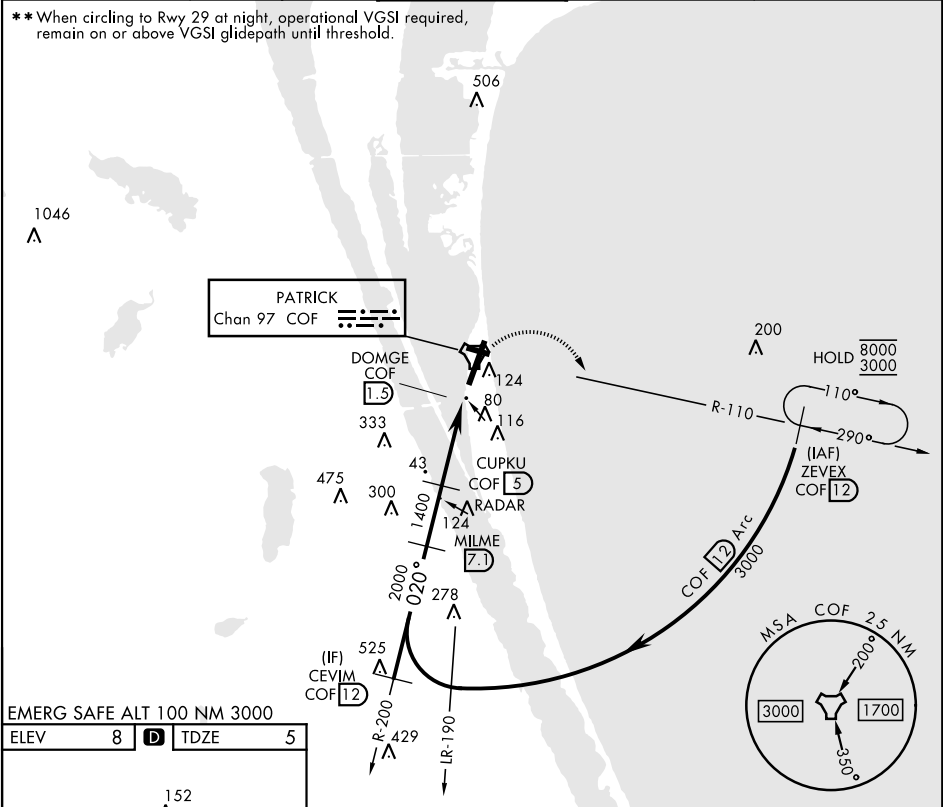
PATRICK SFB (KCOF)

▼ * When ALS inop, increase CAT AB RVR to 55 and vis to 1 mile, CAT CDE vis to 1 3/8 miles.
** Circling not authorized NW of Rwy 3-21.

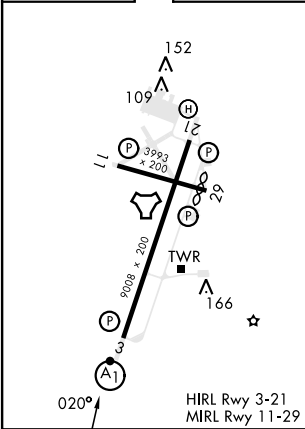
ALSF-1
A1

MISSED APPROACH: Climb to 600, then climbing right turn to 3000 and intercept COF TACAN R-110 to ZEVEX/12 DME and hold, continue climb in hold to 3000.

ATIS ★ 119.175 273.5	ORLANDO APP CON ★ 126.025 281.425	TOWER ★ 133.75 269.375	GND CON ★ 124.35 335.8	CLNC DEL ★ 118.4 289.4
-------------------------	--------------------------------------	---------------------------	---------------------------	---------------------------



EMERG SAFE ALT 100 NM 3000
ELEV 8 D TDZE 5



	CEVIM COF 12	MILME COF 7.1	CUPKU COF 5	COF 2.4	COF TACAN	DOMGE COF 1.5
	3000	2000	1400			
	020°		3.16°			
			TCH 53			
			3.5 NM	0.5		
CATEGORY	A	B	C	D	E	
S-03*	520/24	515 (600-1/2)	520/55	515 (600-1)		
CIRCLING**	520-1	512 (600-1)	540-1 1/2 532 (600-1 1/2)	560-2 552 (600-2)	580-2 572 (600-2)	

TACAN RWY 3

SE-3, 07 AUG 2025 to 04 SEP 2025

SE-3, 07 AUG 2025 to 04 SEP 2025