

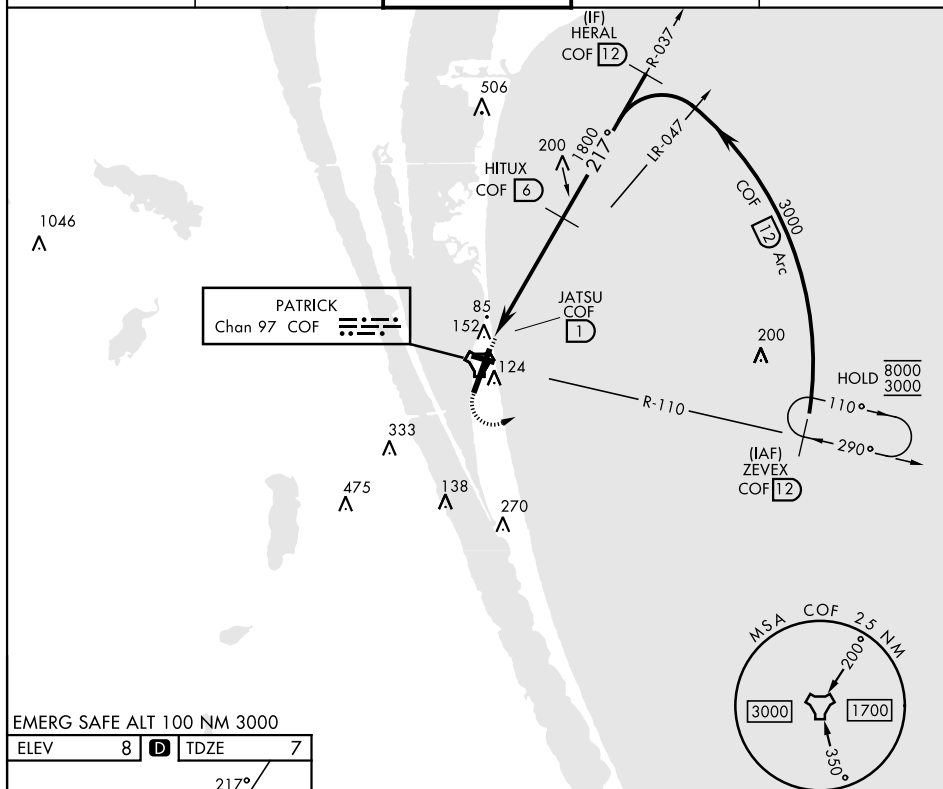
TACAN COF Chan 97	APCH CRS 217°	Rwy Idg 9008 TDZE 7 Arpt Elev 8
-----------------------------	-------------------------	--

PATRICK SFB (KCOF)

T * When Circling to Rwy 29 at night, operational VGSi required, remain on or above VGSi glidepath until threshold. Circling not authorized NW of Rwy 3-21.

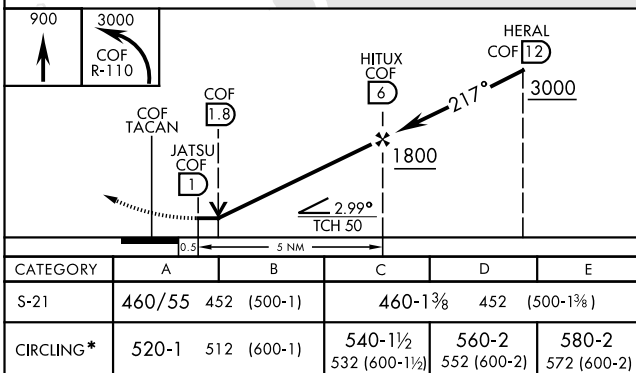
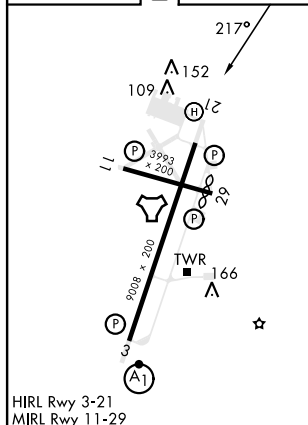
MISSED APPROACH: Climb to 900, then climbing left turn to 3000 to intercept the COF TACAN R-110 to ZEVEX and hold.

CLNC DEL★
118.4 289.4



EMERG SAFE ALT 100 NM 3000

ELEV	8	D	TDZE	7
------	---	----------	------	---



28° 14' N-80° 37' W

PATRICK SFB (KCOF)

Amdt 4 02NOV23

TACAN RWY 21

SE-3, 07 AUG 2025 to 04 SEP 2025