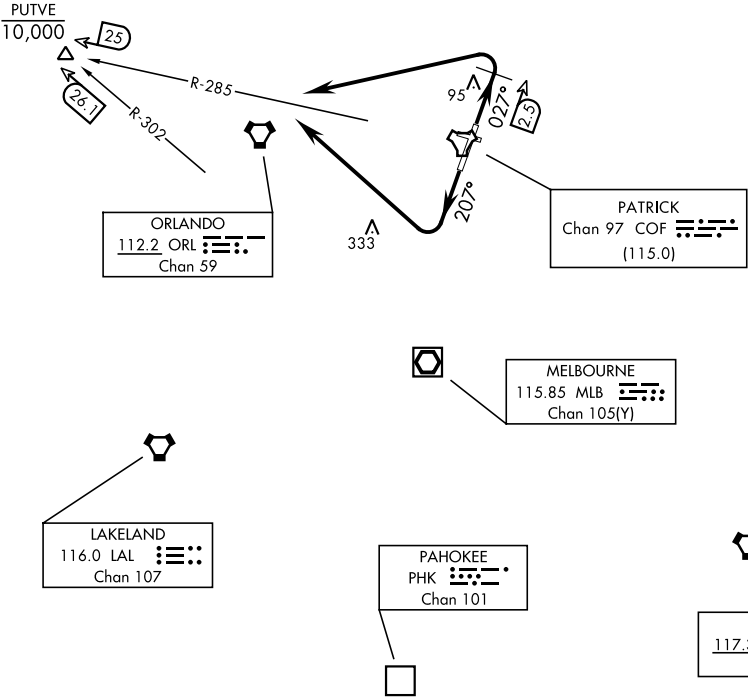


ATIS ★ 119.175 273.5 CLNC DEL ★ 118.4 289.4 GND CON ★ 124.35 335.8 TOWER ★ 133.75 269.375 ORLANDO DEP CON ★ 126.025 281.425	DME required	[USAF]							
		Rwy	Knots	60	120	180	240	300	360
		03/21	V/V(fpm)	210	420	630	840	1050	1260
		Minimum Climb Rate to 500							

Minimum Climb Rate to 500

TOP ALTITUDE
2000

ORMOND BEACH
112.6 OMN
Chan 73



NOTE: Chart not to scale

DEPARTURE ROUTE DESCRIPTION

Expect clearance to filed altitude/flight level 10 minutes after departure.

TAKEOFF RWY 03: Climb on hdg 027° to COF TACAN 2.5 DME, then left turn to intercept COF R-285 to cross PUTVE (COF 25 DME/MLB VOR/DME 26.1 DME) at or below 10,000, maintain 2000 or higher as assigned.

TAKEOFF RWY 21: Climb on hdg 207°, then right turn to intercept COF TACAN R-285 to cross PUTVE (COF 25 DME/MLB VOR/DME 26.1 DME) at or below 10,000, maintain 2000 or higher as assigned.