

RNAV (GPS) RWY 3

APCH CRS	Rwy Idg	9008
027°	TDZE	5
	Arprt Elev	8

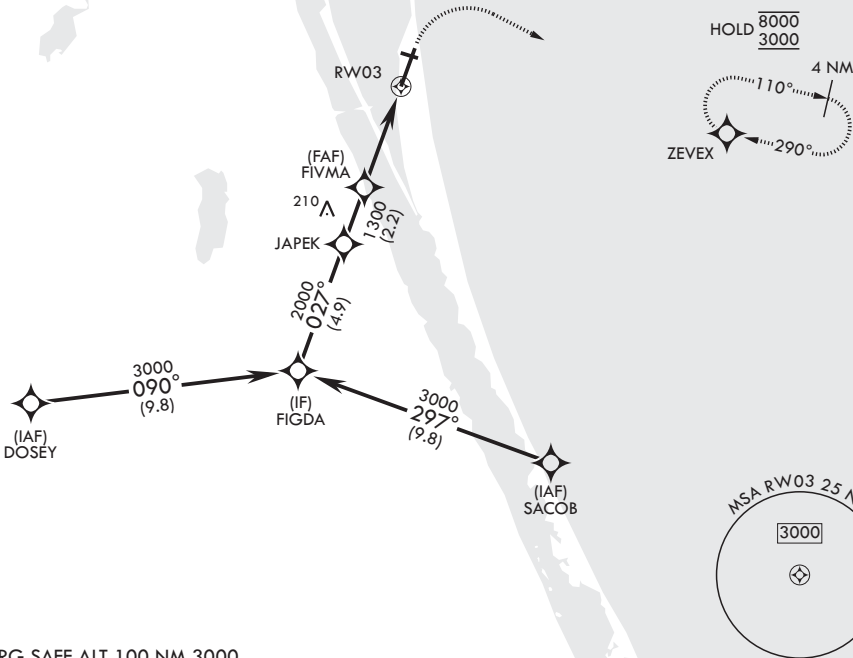
(USAF)

PATRICK SFB (KCOF)

RNP APCH-GPS	ALSF-1	MISSED APPROACH: Climb to 600 then climbing right turn to 3000 direct ZEVEX and hold.
<p>▼ * When ALS inop, increase CAT AB RVR to 55, vis to 1 mile; CAT CD vis to 1 3/8 miles. ** Circling not authorized NW of RWY 3-21.</p>		

ATIS★ 119.175 273.5	ORLANDO APP CON/DEP CON★ 126.025 281.425	TOWER★ 133.75 269.375	GND CON★ 124.35 335.8	CLNC DEL★ 118.4 289.4
------------------------	---------------------------------------------	--------------------------	--------------------------	--------------------------

When circling to Rwy 29 at night, operational VGSI required, remain on or above VGSI glidepath until threshold.



EMERG SAFE ALT 100 NM 3000

FIGDA	3000	027°	JAPEK	2000	FIVMA	1300	1.3 NM to RWY 03	RWY 03	ELEV 8	TDZE 5
							3.00° TCH 53			
							3.9 NM			
CATEGORY	A	B	C	D						
LNAV MDA*	480/24	475 (500-½)	480/50	475 (500-1)						
CIRCLING**	520-1	512 (600-1)	540-1½ 532 (600-1½)	560-2 552 (600-2)						



RNAV (GPS) RWY 3

SE-3, 07 AUG 2025 to 04 SEP 2025

SE-3, 07 AUG 2025 to 04 SEP 2025