

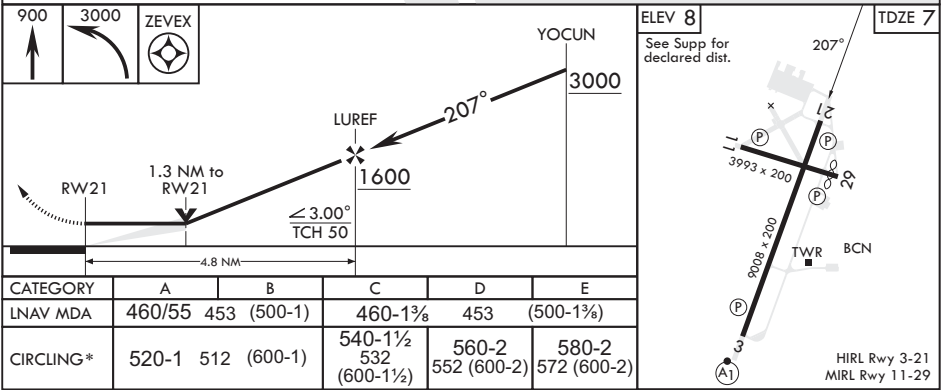
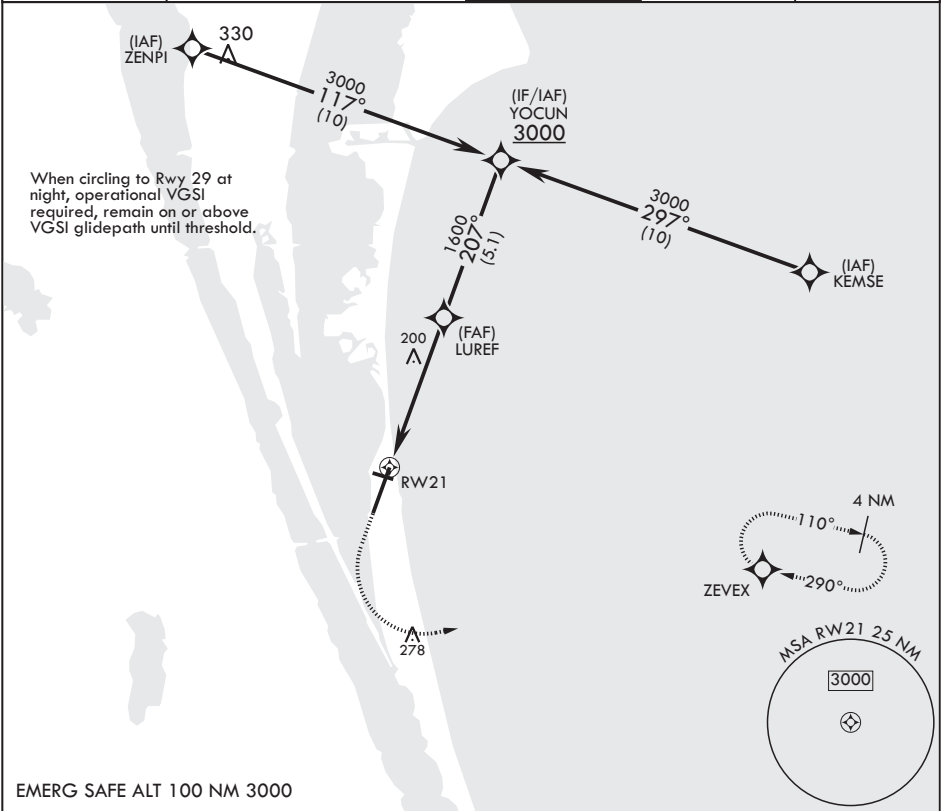
APCH CRS	Rwy Idg	9008
207°	TDZE	7
	Arprt Elev	8

(USAF)

PATRICK SFB (KCOF)

RNP APCH-GPS	MISSED APPROACH: Climb to 900 then climbing left turn to 3000 direct ZEVEX and hold.
* Circling NA NW of RWY 3-21.	

ATIS*	ORLANDO APP CON/DEP CON*	TOWER*	GND CON*	CLNC DEL*
119.175 273.5	126.025 281.425	133.75 269.375	124.35 335.8	118.4 289.4



SE-3, 07 AUG 2025 to 04 SEP 2025

SE-3, 07 AUG 2025 to 04 SEP 2025