

WAAS CH 58118 W30A	APP CRS 301°	Rwy Ldg TDZE 493 Apt Elev 510
--	------------------------	---

RNAV (GPS) RWY 30R

MEADOWS FLD (BFL)

RNP APCH

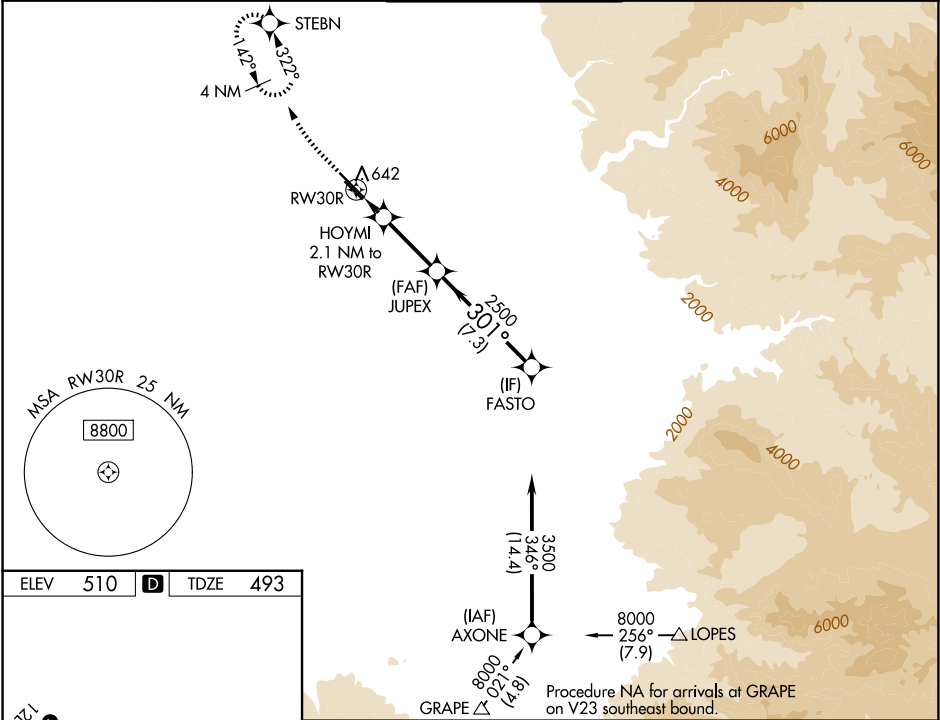
▼

For uncompensated Baro-VNAV systems, LNAV/VNAV NA below 0°C (32°F) or above 54°C (130°F). Circling NA northeast of Rwy 12L-30R. When local altimeter setting not received, use Porterville altimeter setting: increase LPV DA to 790, LNAV/VNAV DA to 990. Increase LNAV/VNAV all Cats visibilities to 1¼ mile; increase all MDA 100 feet and LNAV visibility Cats C and D to RVR 5000. VDP and Baro-VNAV NA when using Porterville altimeter setting. For inop ALS when using Porterville altimeter setting, increase LPV all Cats visibility to RVR 5000 and LNAV Cat C and D visibility to 1%. # RVR 2400 when using Porterville altimeter setting.

MALSR

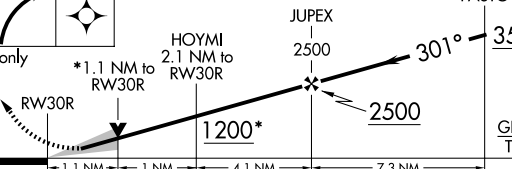
MISSED APPROACH: Climb to 1000 then climbing right turn to 3000 direct STEBN and hold.

ATIS 118.6	BAKERSFIELD APP CON * 118.9 270.3 (N) 118.8 284.625 (S)	BAKERSFIELD TOWER * 118.1 (CTAF) 257.8	GND CON 121.7	UNICOM 122.95
----------------------	---	---	-------------------------	-------------------------



ELEV 510 TDZE 493

TDZ/CL Rwy 30R
HIRL Rwy 12L-30R
MIRL Rwy 12R-30L
REIL Rwy 12R and 30L

1000	3000	STEBN				
*LNAV only			HOYMI 2.1 NM to RW30R		JUPEX 2500	FASTO 3500
			*1.1 NM to RW30R		2500	GP 3.00° TCH 51
			1200*			
			1.1 NM		1 NM	
			4.1 NM		7.3 NM	
CATEGORY	A		B		C	
LPV DA#			698/18		205 (200-½)	
LNAV/VNAV DA			898/45		405 (400-¾)	
LNAV MDA	880/24		387 (400-½)		880/35 387 (400-¾)	
CIRCLING	960-1		450 (500-1)		960-1½ 450 (500-1½)	
					1060-2 550 (600-2)	