

WAAS CH 78418 W12A	APP CRS 121°	Rwy Ldg 10849 TDZE 510 Apt Elev 510
--	------------------------	--

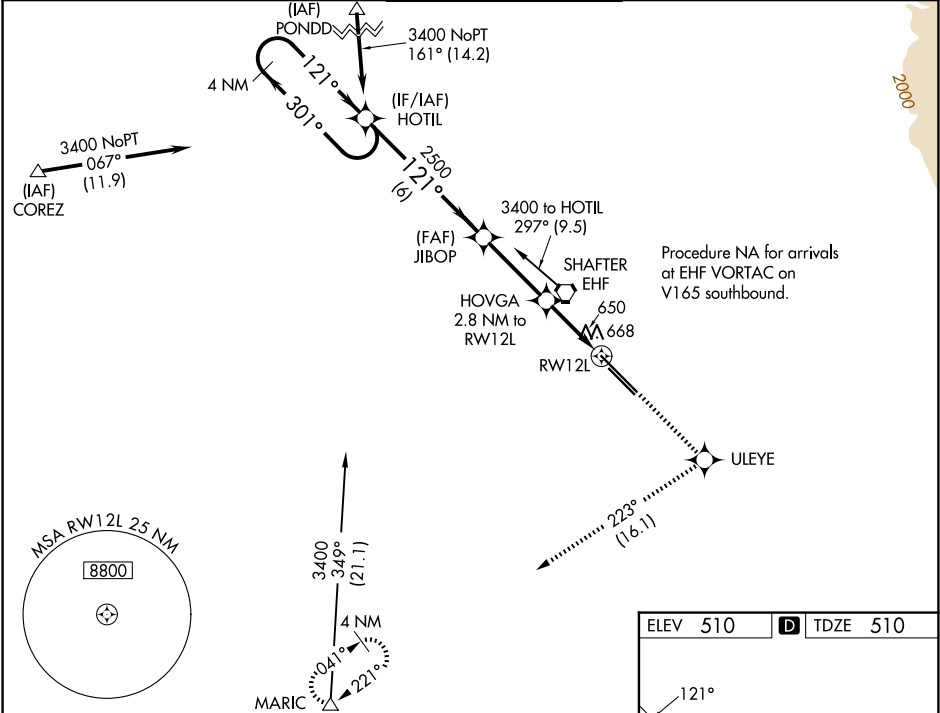
RNAV (GPS) RWY 12L
MEADOWS FLD (BFL)

RNP APCH.

Baro-VNAV NA when using Porterville altimeter setting. For uncompensated Baro-VNAV systems, LNAV/VNAV NA below -16°C or above 54°C. Rwy 12L helicopter visibility reduction below ¾ SM NA. When local altimeter setting not received, use Porterville altimeter setting and increase all DA 92 feet, all MDA 100 feet, increase LPV all Cats, LNAV/VNAV all Cats and LNAV Cats C/D visibility ¼ mile.

MISSED APPROACH:
Climb to 3000 direct ULEYE and right turn on track 223° to MARIC and hold.

ATIS 118.6	BAKERSFIELD APP CON★ 118.9 270.3 (N) 118.8 284.625 (S)	BAKERSFIELD TOWER★ 118.1 (CTAF) 257.8	GND CON 121.7	UNICOM 122.95
----------------------	--	---	-------------------------	-------------------------



4 NM Holding Pattern

3400 ← 301°
121° →

GP 3.00°
TCH 52

2500

6 NM | 3.2 NM | 1.7 NM | 1.1 NM

HOTIL

JIBOP

HOVGA
2.8 NM to RW12L

1.1 NM to RW12L

RW12L

*1440

3000

ULEYE

tr 223°

MARIC

*LNAV only

CATEGORY	A	B	C	D
LPV DA	760-1 250 (300-1)			
LNAV/VNAV DA	1073-2 563 (600-2)			
LNAV MDA	920-1 410 (500-1)		920-1¼ 410 (500-1¼)	

121°

0.4% DOWN

10849 1.50

700X 100 -0.3% UP

TWR

30L

30R

TDZ/CL Rwy 30R

HIRL Rwy 12L-30R

MIRL Rwy 12R-30L

REIL Rwy 12R and 30L

SW-3, 07 AUG 2025 to 04 SEP 2025

SW-3, 07 AUG 2025 to 04 SEP 2025