




VOR/DME BKE 115.3 Chan 100	APP CRS 118°	Rwy Idg 5084 TDZE 3370 Apt Elev 3373
--	------------------------	---

VOR/DME RWY 13
BAKER CITY MUNI (BKE)



 -23°C

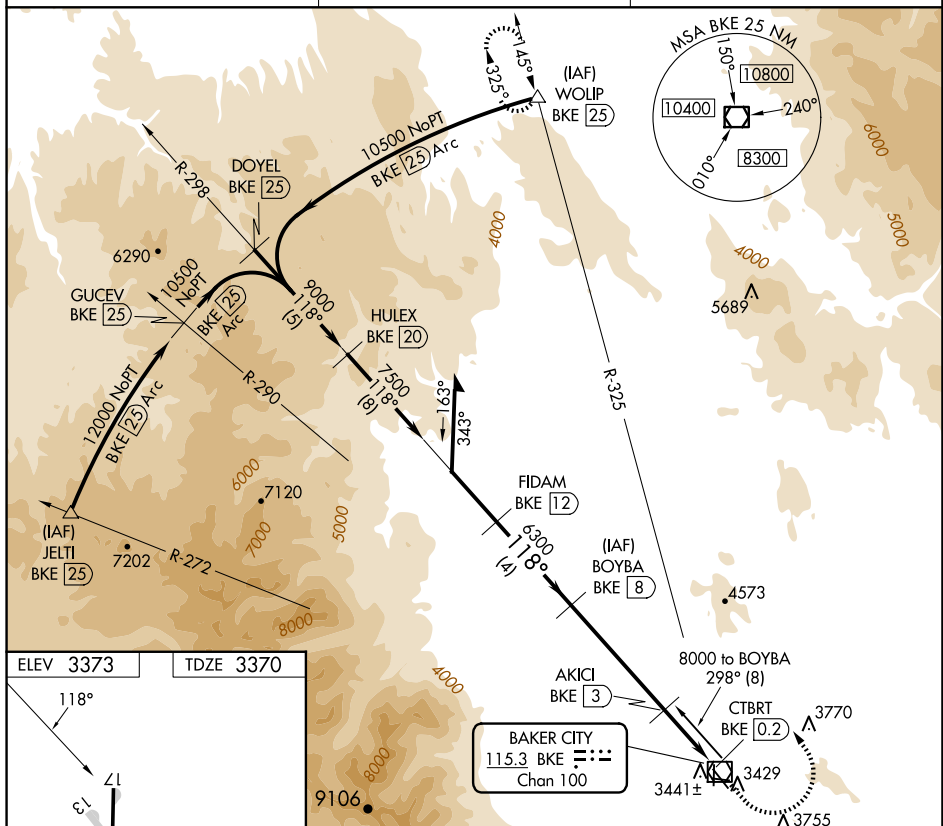
Circling to Rwy 8/17/26/35 NA at night.
 Helicopter visibility reduction below 1 SM NA.

MISSED APPROACH: Climb to 4000 then climbing left turn to 10500 via BKE R-325 to WOLUP and hold.

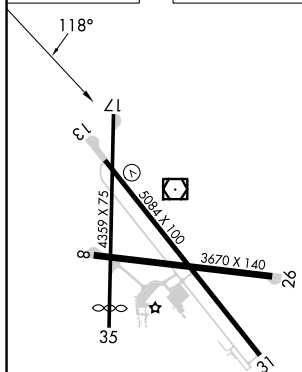
ASOS
134.275

SALT LAKE CENTER
128.05 306.95

UNICOM
123.0 (CTAF) 



ELEV 3373		TDZE 3370
-----------	--	-----------

REIL Rwy 13 and 31 **L**MIRL Rwy 13-31 **L**

Remain within 10 NM

BOYBA BKE [8]

298°

8000

FIDAM BKE [12]

7500

118°

3.49° TCH 55

6300

4440

4000

10500

WOLP

BKE R-325

△

AKICI BKE [3]

CTBRT BKE [0.2]

VGSI and descent angles not coincident (VGSI 3.00/TCH 47).

4 NM

5 NM

2.8 NM

CATEGORY	A	B	C	D
S-13	4000-1	630 (700-1)	4000-1 ³ / ₄ 630 (700-1 ³ / ₄)	4000-2 630 (700-2)
C CIRCLING	4000-1	627 (700-1)	4560-3 1187 (1200-3)	4720-3 1347 (1400-3)

VOR/DME RWY 13