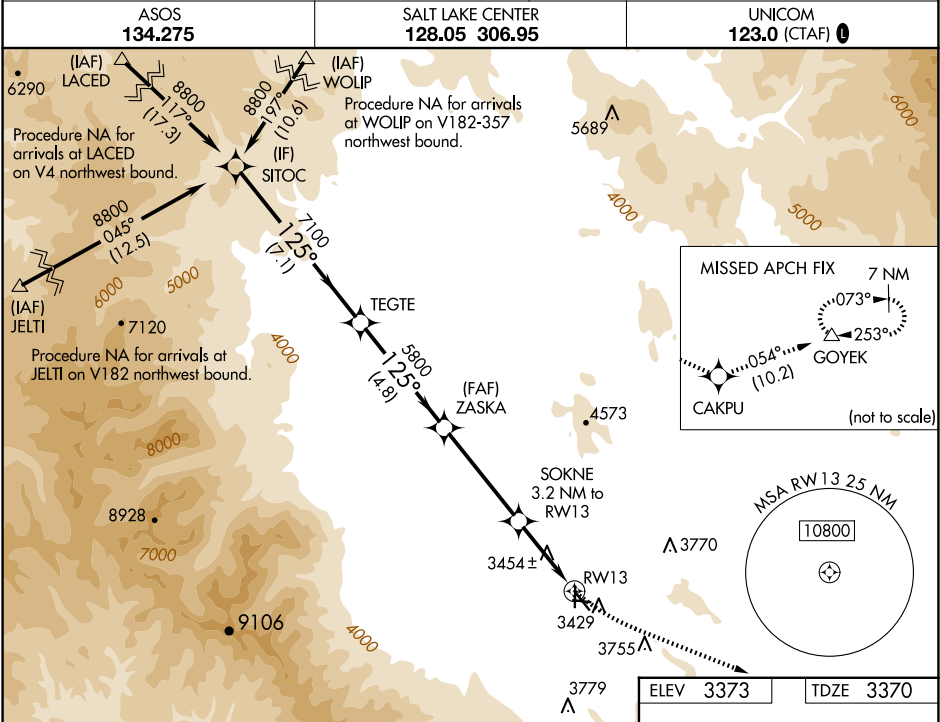


WAAS CH 90133 W13A	APP CRS 125°	Rwy Idg TDZE 3370 Apt Elev 3373	5084 3370 3373
--	------------------------	---	---

RNAV (GPS) RWY 13

BAKER CITY MUNI (BKE)

RNP APCH - GPS.	MISSED APPROACH: Climb to 3800 then climbing left turn to 11000 direct CAKPU and on track 054° to GOYEK and hold, continue climb-in-hold to 11000. # Missed approach requires minimum climb of 266 feet per NM to 4580.
<div><div>▼</div><div>▲</div><div>⚡</div></div> For uncompensated Baro-VNAV systems, LNAV/VNAV NA below -22°C or above 51°C. Rwy 13 helicopter visibility reduction below ¾ SM NA. Circling Rwy 8, 17, 26, and 35 NA at night.	



VGSI and RNAV glidepath not coincident (VGSI Angle 3.00/TCH 47.)				
<div><div>SITOC</div><div>TEGTE</div><div>ZASKA</div><div>SOKNE</div><div>RW13</div><div>GOYEK</div></div>				
<div><div>8800</div><div>7100</div><div>5800</div><div>4420</div><div>5800</div><div>3800</div><div>11000</div><div>CAKPU</div><div>GOYEK</div></div>				
<div><div>GP 3.00°</div><div>TCH 55</div><div>7.1 NM</div><div>4.8 NM</div><div>4.3 NM</div><div>0.8 NM</div><div>2.4 NM</div></div>				
CATEGORY	A	B	C	D
LPV DA #	3621-¾ 251 (300-¾)			
LPV DA	3833-1½ 463 (500-1½)			
LNAV/VNAV DA	3916-1⅞ 546 (600-1⅞)			
LNAV MDA	4200-1 830 (900-1)	4200-1¼ 830 (900-1¼)	4200-2½ 830 (900-2½)	830 (900-2½)
CIRCLING	4200-1¼ 827 (900-1¼)	4560-3 1187 (1200-3)		
		4720-3 1347 (1400-3)		

REIL Rwy 13 and 31

MIRL Rwy 13-31