

LOC I-CEC <u>108.7</u>	APP CRS 119°	Rwy Idg 5002 TDZE 60 Apt Elev 61
----------------------------------	------------------------	---

ILS or LOC RWY 12

JACK MC NAMARA FLD (CEC)

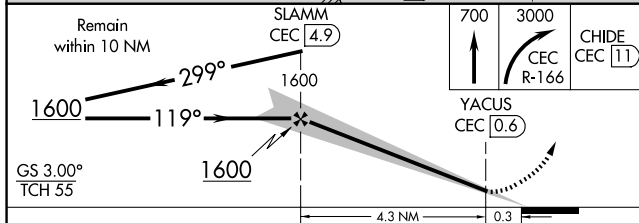
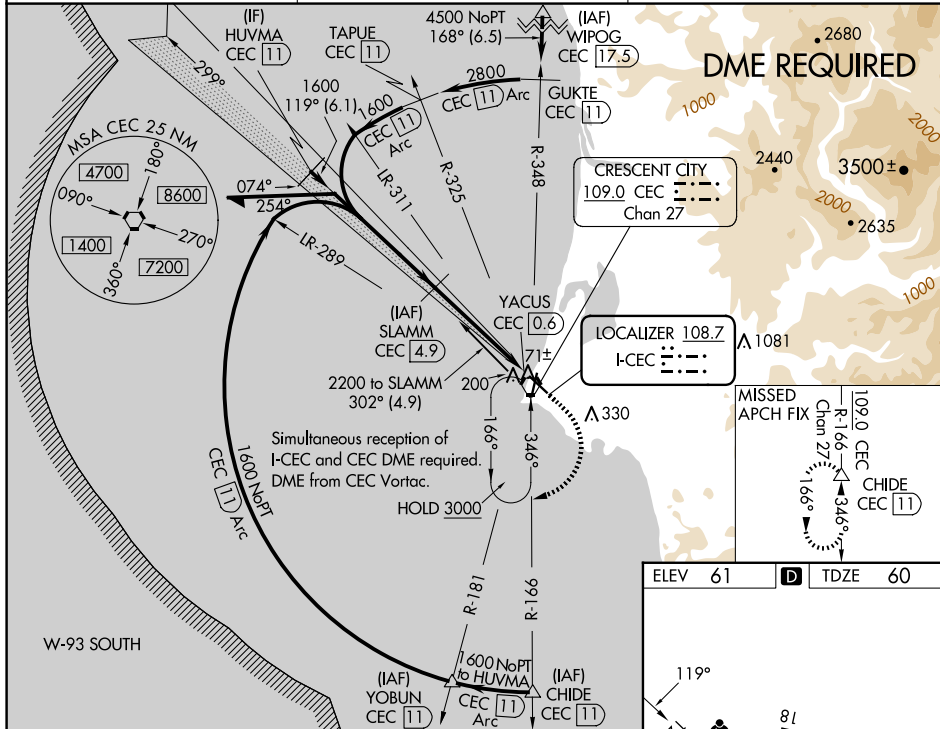
T DME required. S-ILS 12: ½ mile visibility authorized with use of FD or AP or HUD to DA. Inop table does not apply to S-ILS 12, except with use of FD or AP or HUD to DA. For inop MALSR, increase S-LOC 12 all Cats visibility ¼ mile. When local altimeter setting not received, use Brookings altimeter setting and increase DA to 407 feet and all MDA 100 feet; increase S-LOC 12 Cat C/D, and Circling Cat D visibilities ¼ mile. For inop MALSR, when using Brookings altimeter setting, increase S-ILS 12 all Cats visibility to 1 mile. Night Landing: Rwy 36 operational VGSI required, remain on or above VGSI glidepath until threshold. Circling to Rwy 18, 30 NA at night.

MALSR

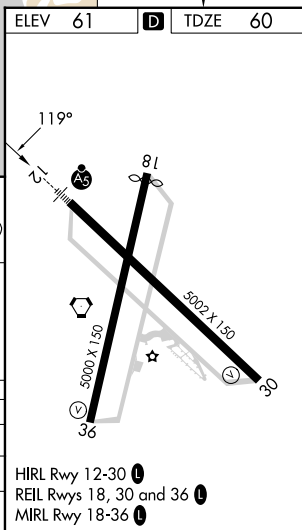


MISSED APPROACH:
Climb to 700 then
climbing right turn to
3000 on CEC VORTAC
R-166 to CHIDE/CEC 11
DME and hold, continue
climb-in-hold to 3000.

ASOS 119,925	SEATTLE CENTER 124.85 306.3	UNICOM 122.8 (CTAF) 0
------------------------	---------------------------------------	--



CATEGORY	A	B	C	D
S-ILS 12		310- $\frac{3}{4}$	250 (300- $\frac{3}{4}$)	
S-LOC 12		380- $\frac{3}{4}$	320 (400- $\frac{3}{4}$)	
C CIRCLING	540-1	479 (500-1)	640-1 $\frac{1}{2}$ 579 (600-1 $\frac{1}{2}$)	640-2 579 (600-2)



CRESCENT CITY, CALIFORNIA

Amdt 9 15OCT15

41°47'N-124°14'W

JACK MC NAMARA FLD (CEC)

ILS or LOC RWY 12

SW-2, 07 AUG 2025 to 04 SEP 2025