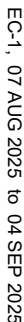


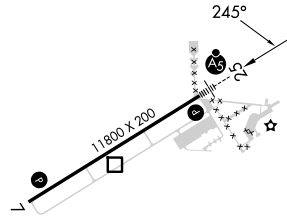
RNAV (GPS) RWY 25
OSCODA/WURTSMITH (OSC)

▼ Circling NA southeast of Rwy 7-25. Baro-VNAV and VDP NA when using Alpena altimeter setting. For uncompensated Baro-VNAV systems, LNAV/VNAV NA below -16°C or above 54°C. When local altimeter setting not received, use Alpena altimeter setting and increase all DA 96 feet and all MDA 100 feet. Increase LNAV/VNAV all Cats and LNAV and Circling Cat C visibility ¼ SM, and Circling Cat D visibility ½ SM. For inop ALS, increase LNAV Cats C and D visibility to 1 SM. For inop ALS when using Alpena altimeter setting, increase LPV all Cats visibility to ¾ SM.

MISSED APPROACH:
Climb to 3000 direct
CEDPA and hold.

UNICOM
123.0 (CTAF) 

ELEV	633		TDZE	624
------	-----	--	------	-----



REIL Rwy 7 **L**
HIRL Rwy 7-25 **L**