

LOC	I-LJU	APP CRS	Rwy Ldg	11800
108.5	245°	TDZE	624	
		Apt Elev	633	

ILS or LOC RWY 25

OSCODA/WURTSMITH (OSC)

DME required.

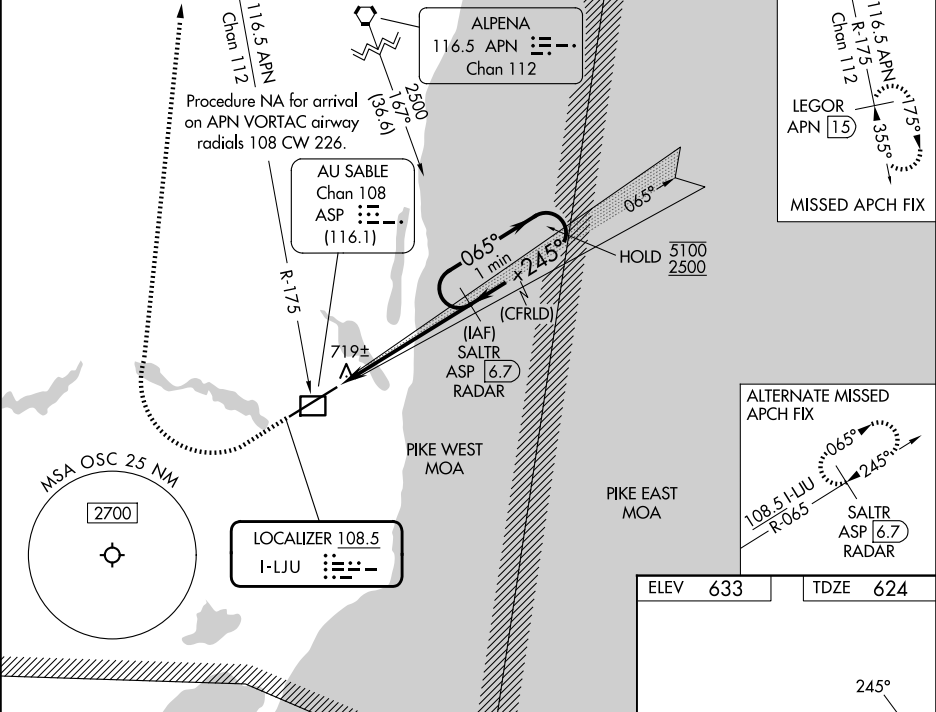
NA

Circling NA southeast of Rwy 7-25. For inop ALS, increase S-LOC Cats C and D visibility to 1 SM. DME from ASP DME. Simultaneous reception of I-LJU and ASP DME required.

MALSR

MISSED APPROACH: Climb to 1300 then climbing right turn to 3000 on heading 030° and on APN VORTAC R-175 to LEGOR/APN 15 DME and hold.

AWOS-3	MINNEAPOLIS CENTER	UNICOM
118.7	125.475 269.45	123.0 (CTAF) 0



1300 3000

hdg 030° APN R-175

LEGOR APN 15

VGSI and ILS glidepath not coincident (VGSI Angle 3.00/TCH 72).

One Minute Holding Pattern

ASP 1.1

ASP 2

2500

065° 245°

5100 2500

GS 3.00° TCH 56

*LOC only.

0.9 NM

4.7 NM

CATEGORY	A	B	C	D
S-ILS 25	824-1/2 200 (200-1/2)			
S-LOC 25	980-1/2 356 (400-1/2)		980-5/8 356 (400-5/8)	
CIRCLING	1140-1 507 (600-1)		1160-1 1/2 527 (600-1 1/2)	1300-2 667 (700-2)

ELEV 633 TDZE 624

REIL Rwy 7 0

HIRL Rwy 7-25 0