

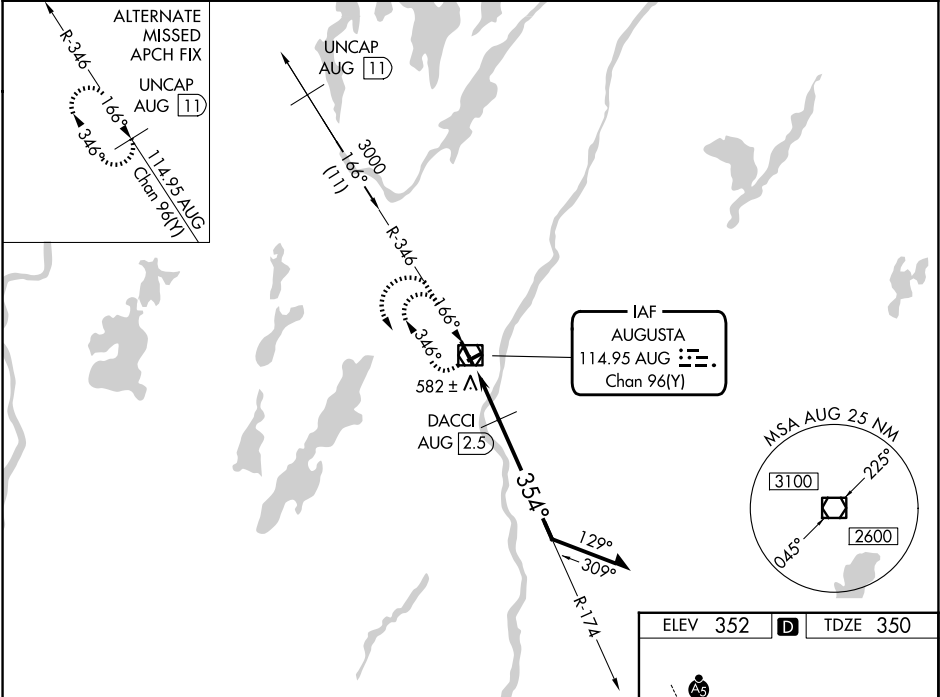
VOR/DME AUG <b>114.95</b> Chan <b>96(Y)</b>	APP CRS <b>354°</b>	Rwy Ldg TDZE Apt Elev <b>5002</b> <b>350</b> <b>352</b>
---	------------------------	--

VOR RWY 35  
AUGUSTA STATE (AUG)

**⚠** Rwy 35 helicopter visibility reduction below 3/4 SM NA. When local altimeter setting not received, use Waterville altimeter setting: increase all MDA 40 feet and visibility S-35 Cats C and D 1/2 SM, and Circling Cat D 1/4 SM; DACCI fix minimums increase visibility S-35 Cats C and D 1/2 SM, and Circling Cat D 1/4 SM. Circling Rwy 8, 26 NA at night.

**MISSED APPROACH:** Climb to 1200 on AUG VOR/DME R-346, then climbing left turn to 2300 direct AUG VOR/DME and hold.

ASOS <b>118.325</b>	PORTLAND APP CON ★ <b>128,35 299,2</b>	CLNC DEL <b>119,95 299,2</b>	UNICOM <b>123.0 (CTAF) 0</b>
------------------------	---	---------------------------------	---------------------------------



1200 ↑ AUG R-346

2300 ↘ AUG

AUG VOR/DME

174° 354° 2200

3.00° TCH 46

AUG 1.7

AUG 2.5

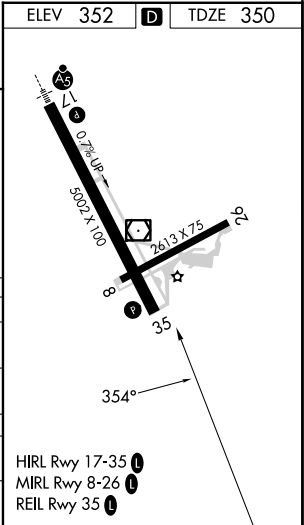
1100

Remain within 10 NM

VGSI and descent angles not coincident (VGSI Angle 3.00/TCH 40).

0.3 1.4 0.8 NM

CATEGORY	A	B	C	D
S-35	1100-1 750 (800-1)	1100-1¼ 750 (800-1¼)	1100-2	750 (800-2)
CIRCLING	1100-1 748 (800-1)	1100-1¼ 748 (800-1¼)	1100-2¼ 748 (800-2¼)	1160-2½ 808 (900-2½)
DACCI FIX MINIMUMS				
S-35	840-1	490 (500-1)	840-1⅜	490 (500-1⅜)
CIRCLING	960-1 608 (700-1)	980-1 628 (700-1)	980-1¾ 628 (700-1¾)	1160-2½ 808 (900-2½)



NE-1, 07 AUG 2025 to 04 SEP 2025

NE-1, 07 AUG 2025 to 04 SEP 2025