

WAAS CH 70406 W35A	APP CRS 351°	Rwy Ldg 5002 TDZE 350 Apt Elev 352
--	------------------------	---

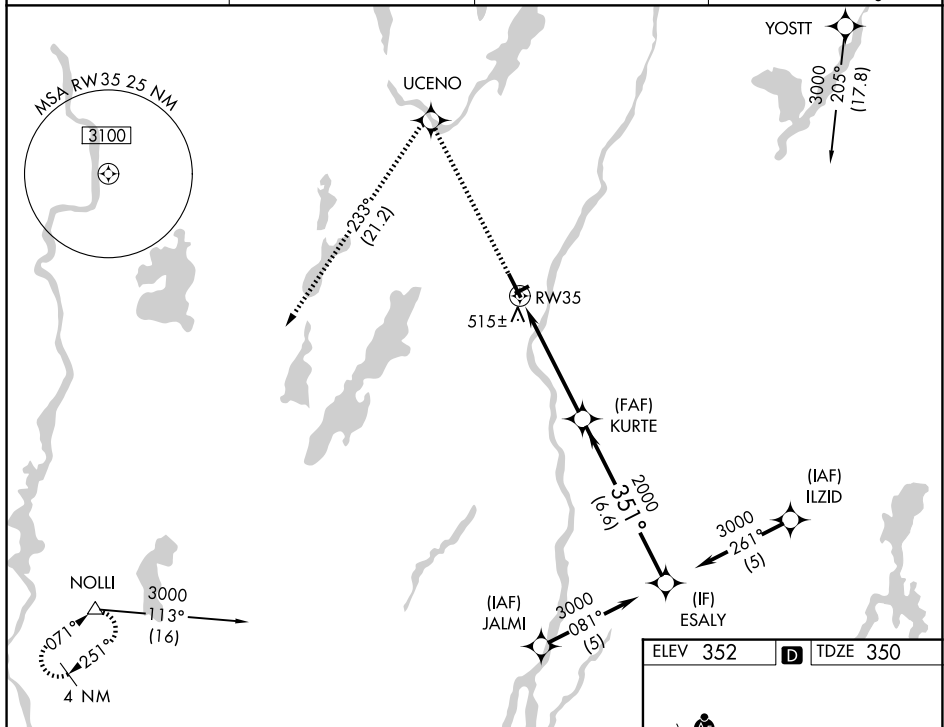
RNAV (GPS) RWY 35
AUGUSTA STATE (AUG)

RNP APCH.

V Circling to Rwy 26 NA at night. Rwy 35 helicopter visibility reduction below $\frac{3}{4}$ SM NA.
A For uncompensated Baro-VNAV systems, LNAV/VNAV NA below -1.5°C or above 54°C.

MISSED APPROACH: Climb to 3000 direct UCENO and left turn on track 233° to NOLL and hold.

ASOS 118.325	PORTLAND APP CON ★ 128.35 299.2	CLNC DEL 119.95 299.2	UNICOM 123.0 (CTAF) L
------------------------	---	---------------------------------	---------------------------------



3000 ↑	UCENO ✦	tr 233°	NOLLI △	VGSI and RNAV glidepath not coincident (VGSI Angle 3.00/TCH 40).			
* LNAV only.				KURTE	ESALY		
				3000 GP 3.00° TCH 55			
CATEGORY	A		B	C	D		
LPV DA	610-1		260 (300-1)				
LNAV/ VNAV	850-1 $\frac{3}{4}$		500 (500-1 $\frac{3}{4}$)				
LNAV MDA	840-1		490 (500-1)		840-1 $\frac{3}{8}$ 490 (500-1 $\frac{3}{8}$)		840-1 $\frac{1}{2}$ 490 (500-1 $\frac{1}{2}$)
CIRCLING	880-1 $\frac{3}{4}$ 528 (600-1 $\frac{3}{4}$)		980-1 $\frac{3}{4}$		628 (700-1 $\frac{3}{4}$)		1160-2 $\frac{1}{2}$ 808 (900-2 $\frac{1}{2}$)