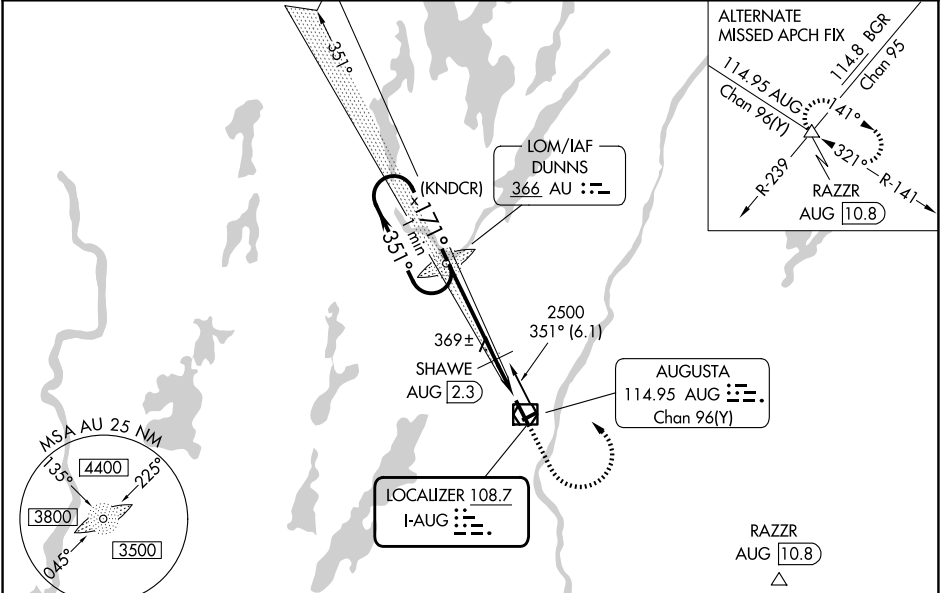


LOC	I-AUG	APP CRS	Rwy Ldg	5002
	108.7	171°	TDZE	348
			Apt Elev	352

ILS or LOC RWY 17  
AUGUSTA STATE (AUG)

ADF required.	MALSR	MISSED APPROACH: Climb to 1000 then climbing left turn to 2500 direct DUNNS LOM and hold.
⚠ Localizer unusable from 0.5 NM to threshold above 1500 feet. When local altimeter setting not received, use Waterville altimeter setting: increase S-ILS 17 DA to 583; increase all MDAs 40 feet and visibility S-LOC 17 Cat C and D ½ SM, and Circling Cat D ¼ SM; SHAWE fix minimums increase S-LOC 17 Cat C and D visibility ½ SM, and Circling Cat D visibility ¼ SM. Glideslope unusable below 430 feet. Circling Rwy 8, 26 NA at night. # DME from AUG VOR/DME.		

ASOS 118.325	PORTLAND APP CON ★ 128.35 299.2	CLNC DEL 119.95 299.2	UNICOM 123.0 (CTAF) 0
-----------------	------------------------------------	--------------------------	--------------------------



<p>One Minute Holding Pattern</p> <p>VGSI and ILS glidepath not coincident (VGSI Angle 3.00/TCH 53).</p> <p>AU LOM</p> <p>2500 ← 351°</p> <p>171° →</p> <p>GS 3.00° TCH 61</p> <p>2173</p> <p>2300</p> <p>171°</p> <p>SHAWE AUG 2.3</p> <p>*LOC only, 940 when using Waterville altimeter setting.</p> <p>*900</p> <p>3.9 NM</p> <p>1.7 NM</p>				<p>ELEV 352</p> <p>171°</p> <p>0.7% UP</p> <p>5002 X 100</p> <p>2613 X 75</p> <p>35</p>																																				
<table border="1"><thead><tr><th>CATEGORY</th><th>A</th><th>B</th><th>C</th><th>D</th></tr></thead><tbody><tr><td>S-ILS 17</td><td colspan="2">548-1/2</td><td colspan="2">200 (200-1/2)</td></tr><tr><td>S-LOC 17</td><td>900-1/2</td><td>552 (600-1/2)</td><td colspan="2">900-1 1/4 552 (600-1 1/4)</td></tr><tr><td>CIRCLING</td><td>940-1 588 (600-1)</td><td>980-1 628 (700-1)</td><td>980-1 3/4 628 (700-1 3/4)</td><td>1160-2 1/2 808 (900-2 1/2)</td></tr><tr><td colspan="5">SHAWE FIX MINIMUMS #</td></tr><tr><td>S-LOC 17</td><td colspan="2">620-1/2</td><td colspan="2">272 (300-1/2)</td></tr><tr><td>CIRCLING</td><td>940-1 588 (600-1)</td><td>980-1 628 (700-1)</td><td>980-1 3/4 628 (700-1 3/4)</td><td>1160-2 1/2 808 (900-2 1/2)</td></tr></tbody></table>				CATEGORY	A	B	C	D	S-ILS 17	548-1/2		200 (200-1/2)		S-LOC 17	900-1/2	552 (600-1/2)	900-1 1/4 552 (600-1 1/4)		CIRCLING	940-1 588 (600-1)	980-1 628 (700-1)	980-1 3/4 628 (700-1 3/4)	1160-2 1/2 808 (900-2 1/2)	SHAWE FIX MINIMUMS #					S-LOC 17	620-1/2		272 (300-1/2)		CIRCLING	940-1 588 (600-1)	980-1 628 (700-1)	980-1 3/4 628 (700-1 3/4)	1160-2 1/2 808 (900-2 1/2)	<p>HIRL Rwy 17-35</p> <p>MIRL Rwy 8-26</p> <p>REIL Rwy 35</p>	
CATEGORY	A	B	C	D																																				
S-ILS 17	548-1/2		200 (200-1/2)																																					
S-LOC 17	900-1/2	552 (600-1/2)	900-1 1/4 552 (600-1 1/4)																																					
CIRCLING	940-1 588 (600-1)	980-1 628 (700-1)	980-1 3/4 628 (700-1 3/4)	1160-2 1/2 808 (900-2 1/2)																																				
SHAWE FIX MINIMUMS #																																								
S-LOC 17	620-1/2		272 (300-1/2)																																					
CIRCLING	940-1 588 (600-1)	980-1 628 (700-1)	980-1 3/4 628 (700-1 3/4)	1160-2 1/2 808 (900-2 1/2)																																				
<p>FAF to MAP 5.6 NM</p> <table border="1"><thead><tr><th>Knots</th><th>60</th><th>90</th><th>120</th><th>150</th><th>180</th></tr></thead><tbody><tr><td>Min:Sec</td><td>5:36</td><td>3:44</td><td>2:48</td><td>2:14</td><td>1:52</td></tr></tbody></table>				Knots	60	90	120	150	180	Min:Sec	5:36	3:44	2:48	2:14	1:52																									
Knots	60	90	120	150	180																																			
Min:Sec	5:36	3:44	2:48	2:14	1:52																																			