

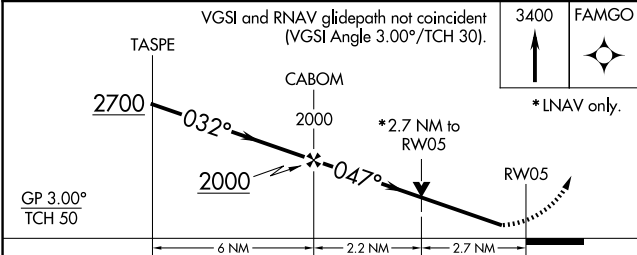
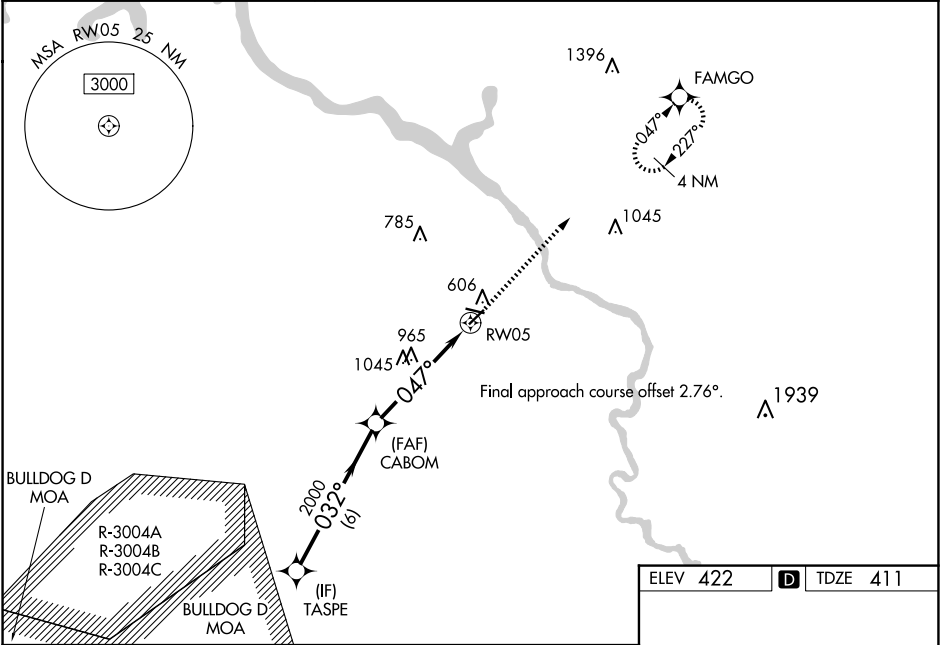
|  |                        |                             |   |
|--|------------------------|-----------------------------|---|
| WAAS<br>CH <b>65842</b><br><b>W05A</b> | APP CRS<br><b>047°</b> | Rwy Idg<br>TDZE<br>Apt Elev | <b>3800</b><br><b>411</b><br><b>422</b> |
|--|------------------------|-----------------------------|---|

RNAV (GPS) RWY 5  
DANIEL FLD (DNL)

|  |
|--|
| RNP APCH.<br><div><div>T</div><div>A</div></div> Baro-VNAV and VDP NA when using Augusta Rgnl at Bush Fld altimeter setting. Rwy 5 helicopter visibility reduction below 3/4 SM NA. For uncompensated Baro-VNAV systems, LNAV/VNAV NA below -15°C or above 54°C. When local altimeter not received use Augusta Rgnl at Bush Fld altimeter setting: Increase LPV DA to 716 feet, LNAV/VNAV DA to 1496 feet and all MDA 60 feet; Increase LPV all Cats visibility 1/2 SM, LNAV Cat A and Circling Cat C visibility 1/4 SM. |
|--|

MISSED APPROACH: Climb to 3400 direct FAMGO and hold, continue climb-in-hold to 3400.

|                        |   |                                  |
|------------------------|---|----------------------------------|
| ASOS<br><b>135.275</b> | AUGUSTA APP CON ★<br><b>126.8 270.3</b> | UNICOM<br><b>123.05 (CTAF) 1</b> |
|------------------------|---|----------------------------------|



| CATEGORY     | A                             | B                             | C                              | D                      |
|--------------|-------------------------------|-------------------------------|--------------------------------|------------------------|
| LPV DA       |                               | 661-3/4                       | 250 (300-3/4)                  |                        |
| LNAV/VNAV DA |                               | 1441-4                        | 1030 (1100-4)                  |                        |
| LNAV MDA     | 1280-1<br>869 (900-1)         | 1280-1 1/4<br>869 (900-1 1/4) | 1280-2 1/2<br>938 (1000-2 3/4) | 869 (900-2 1/2)        |
| CIRCLING     | 1280-1 1/4<br>858 (900-1 1/4) |                               | 1360-2 3/4<br>938 (1000-2 3/4) | 1360-3<br>938 (1000-3) |

