
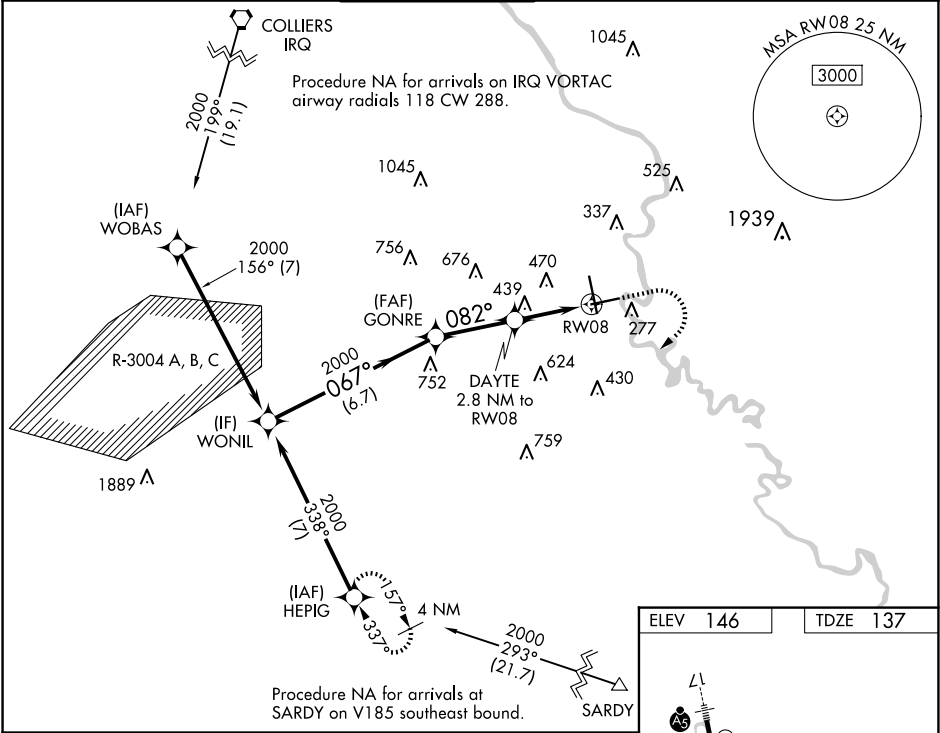


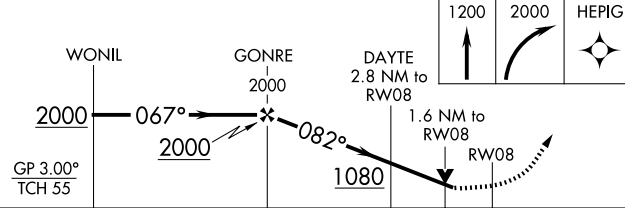

WAAS CH <b>90328</b> <b>W08A</b>	APP CRS <b>082°</b>	Rwy Ldg TDZE <b>137</b> Apt Elev <b>146</b>
----------------------------------------	------------------------	---------------------------------------------------

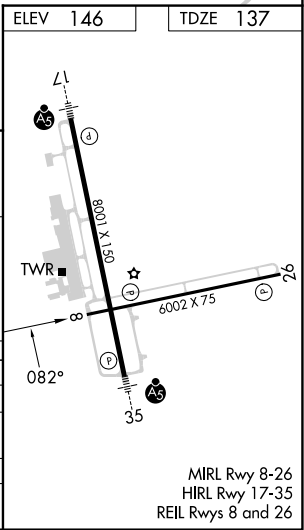
RNAV (GPS) Z RWY 8  
AUGUSTA RGNL AT BUSH FLD (AGS)

RNP APCH - GPS.		MISSED APPROACH: Climb to 1200 then climbing right turn to 2000 direct HEPIG and hold.
 Rwy 8 helicopter visibility reduction below 3/4 SM NA. For uncompensated Baro-VNAV systems, LNAV/VNAV NA below -6°C or above 54°C.		

ATIS <b>132.75</b>	AUGUSTA APP CON ★ <b>126.8 270.3</b>	AUGUSTA TOWER ★ <b>118.7 (CTAF) 239.3</b>	GND CON <b>121.9 348.6</b>	CLNC DEL <b>118.65</b>	UNICOM <b>122.95</b>
-----------------------	-----------------------------------------	----------------------------------------------	-------------------------------	---------------------------	-------------------------



 <p>WONIL 2000 067° 2000 GONRE 2000 082° 1080 DAYTE 2.8 NM to RW08 1.6 NM to RW08 1.2 NM 1.6 NM RW08</p> <p>GP 3.00° TCH 55</p> <p>1200 2000 HEPIG</p>						
CATEGORY	A		B		C	D
LPV DA	669-1½		532 (600-1½)			
LNAV/VNAV DA	693-1⅝		556 (600-1⅝)			
LNAV MDA	700-1	563 (600-1)	700-1⅝	563 (600-1⅝)		
 CIRCLING	760-1	780-1	780-1¾	940-2½		
	614 (700-1)	634 (700-1)	634 (700-1¾)	794 (800-2½)		



SE-4, 07 AUG 2025 to 04 SEP 2025

SE-4, 07 AUG 2025 to 04 SEP 2025