

APP CRS	Rwy Ldg	6002
262°	TDZE	139
	Apt Elev	146

RNAV (GPS) RWY 26
AUGUSTA RGNL AT BUSH FLD (AGS)

	RNP APCH - GPS.
--	-----------------

T Rwy 26 helicopter visibility reduction below $\frac{3}{4}$ SM NA. VDP NA with Daniel Fld altimeter setting.
A When local altimeter setting not received, use Daniel Fld altimeter setting and increase all MDAs 60 feet; increase LNAV and Circling Cats C and D visibility $\frac{1}{4}$ SM.

MISSED APPROACH:
Climb to 3000 direct
GONRE and on track
201° to HEPIG and hold.

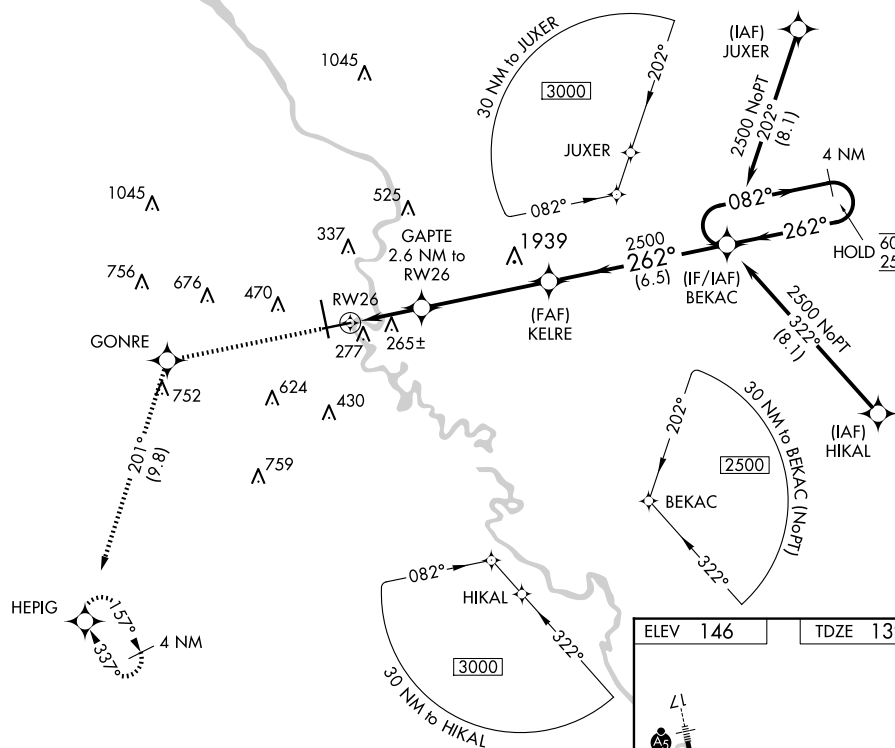
ATIS
132.75

AUGUSTA APP CON ★
126.8 270.3

AUGUSTA TOWER ★
118.7 (CTAF) **L** 239.3

GND CON	
121.9	348.6

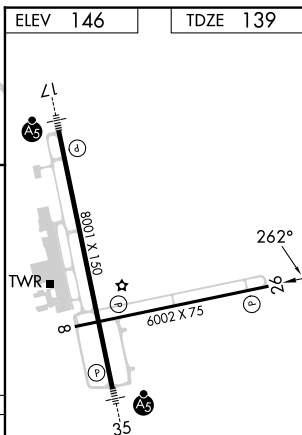
CLNC DEL
118.65

UNICOM
122.95

3000	GONRE	tr 201°	HEPIG
			

Figure 1: Example of a flight plan. The diagram illustrates a flight path starting from a holding pattern (4 NM) at BEKAC, heading 082° for 6000 feet, then turning 262° left to heading 250° for 2500 feet to KELRE. From KELRE, the path turns 3.00° left to heading 1020 for 4.7 NM to RW26. From RW26, it turns 1 NM to RW26, then 2.6 NM to RW26, and finally 1 NM to RW26. The total distance is 10.20 NM. The diagram also shows a 4 NM holding pattern at the start. The diagram includes a compass rose showing a heading of 201° and a scale bar for 1 NM.

CATEGORY	A	B	C	D
INAV MDA	520-1 381 (400-1)		520-1 $\frac{1}{8}$ 381 (400-1 $\frac{1}{8}$)	
C CIRCLING	780-1 634 (700-1)		780-1 $\frac{3}{4}$ 634 (700-1 $\frac{3}{4}$)	940-2 $\frac{1}{2}$ 794 (800-2 $\frac{1}{2}$)

AUGUSTA, GEORGIA
Amdt 1C 29DEC22

33°22'N-81°58'W

AUGUSTA RGNL AT BUSH FLD (AGS)
RNAV (GPS) RWY 26

SE-4, 07 AUG 2025 to 04 SEP 2025