

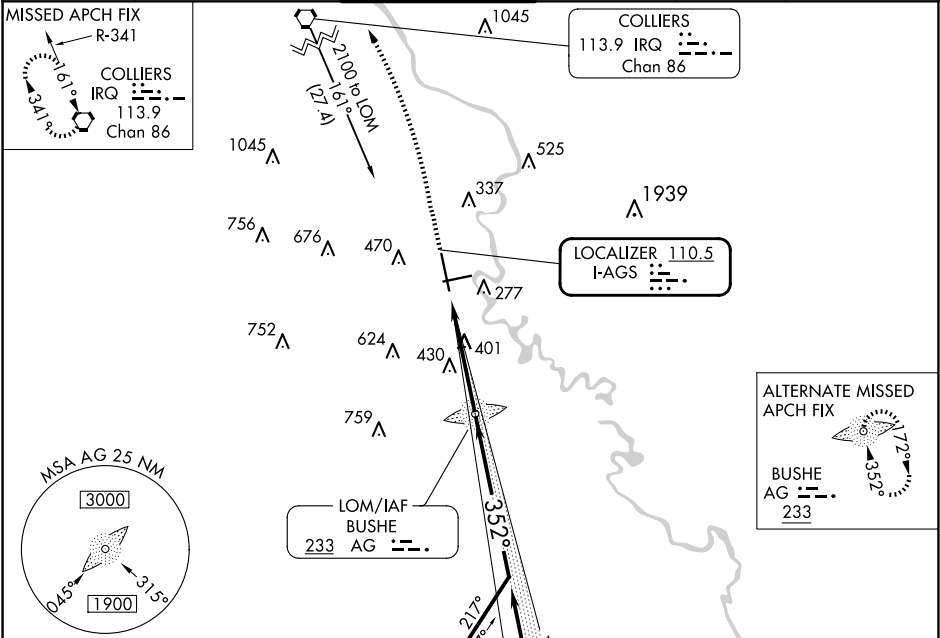
LOC I-AGS 110.5	APP CRS 352°	Rwy Ldg TDZE Apt Elev 8001 137 146	ILS or LOC RWY 35 AUGUSTA RGNL AT BUSH FLD (AGS)
---------------------------	------------------------	--	---

When local altimeter setting not received, use Daniel Fld altimeter setting and increase S-ILS 35 DA to 392; increase all MDAs 60 feet and S-LOC 35 and Circling Cats C and D visibility ¼ SM. Autopilot coupled approach NA below 940.

MALSR

MISSED APPROACH:
Climb to 600 then climbing left turn to 2100 direct IRQ VORTAC and hold.

ATIS 132.75	AUGUSTA APP CON ★ 126.8 270.3	AUGUSTA TOWER ★ 118.7 (CTAF) 0 239.3	GND CON 121.9 348.6	CLNC DEL 118.65	UNICOM 122.95
-----------------------	---	--	-------------------------------	---------------------------	-------------------------



1045

525

1939

LOCALIZER 110.5

I-AGS

756

676

470

752

624

430

401

759

LOM/IAF

BUSHE

AG 233

MSA AG 25 NM

3000

1900

045°

315°

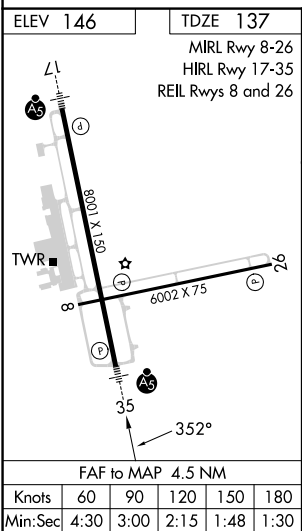
ALTERNATE MISSED APCH FIX

BUSHE

AG 233

72°

352°



FAF to MAP 4.5 NM

Knots

60

90

120

150

180

Min:Sec

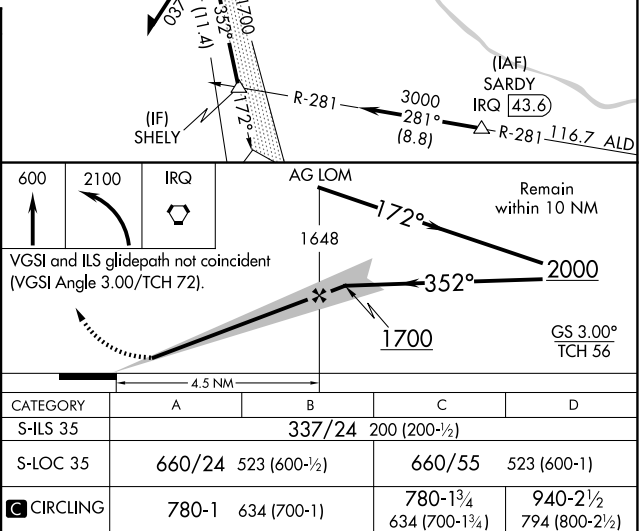
4:30

3:00

2:15

1:48

1:30



VGSI and ILS glidepath not coincident
(VGSI Angle 3.00/TCH 72).

4.5 NM

REMAIN WITHIN 10 NM

3000

281°

(8.8)

R-281

116.7

ALD

CATEGORY

A

B

C

D

S-ILS 35

337/24

200 (200-½)

S-LOC 35

660/24

523 (600-½)

660/55

523 (600-1)

CIRCLING

780-1

634 (700-1)

780-1¾

634 (700-1¾)

940-2½

794 (800-2½)