

LOC I-MZX <b>111.75</b>	APP CRS <b>172°</b>	Rwy Ldg TDZE Apt Elev	<b>8001</b> <b>146</b> <b>146</b>
----------------------------	------------------------	-----------------------------	---

ILS or LOC RWY 17  
AUGUSTA RGNL AT BUSH FLD (AGS)

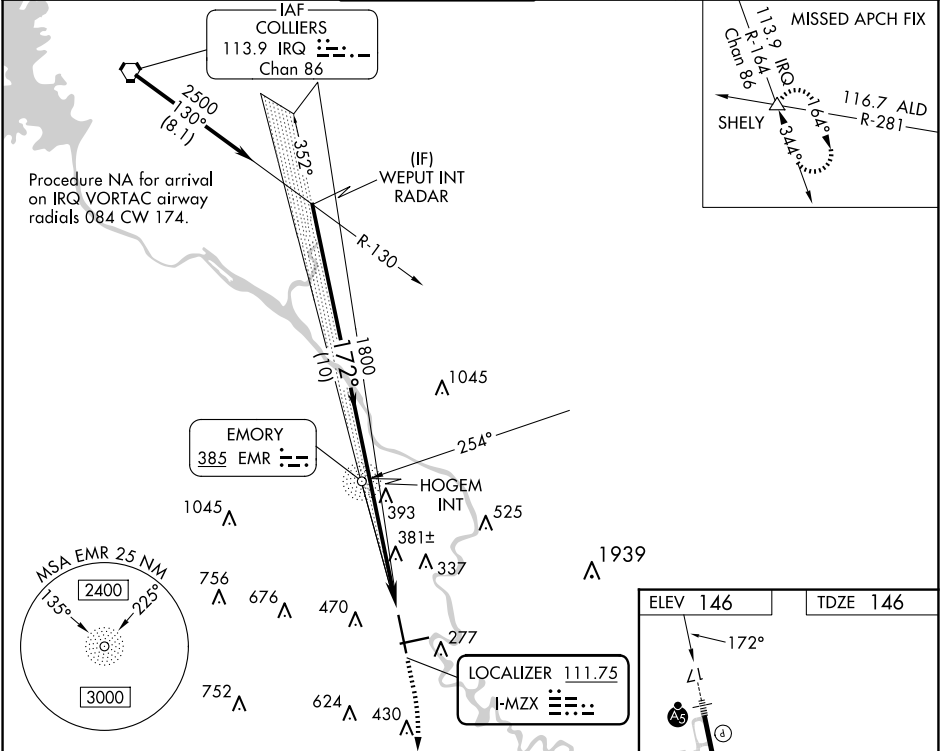
ADF required for LOC only.

▼  
▲ For inop ALS, increase S-LOC 17 Cats C and D visibility to 1½ SM.

MALSRL

MISSED APPROACH: Climb to 3000 on heading 180° and IRQ VORTAC R-164 to SHELLY INT and hold.

ATIS <b>132.75</b>	AUGUSTA APP CON ★ <b>126.8 270.3</b>	AUGUSTA TOWER ★ <b>118.7 (CTAF) 0 239.3</b>	GND CON <b>121.9 348.6</b>	CLNC DEL <b>118.65</b>	UNICOM <b>122.95</b>
-----------------------	---	--	-------------------------------	---------------------------	-------------------------



VGSI and ILS glidepath not coincident (VGSI Angle 3.00/TCH 71).				
WEPUT INT RADAR		HOGEM INT		3000 ↑ hdg 180°
2500		1800		SHELLY △
GS 3.00° TCH 57		10 NM		
CATEGORY	A	B	C	D
S-ILS 17	351/24 205 (300-½)			
S-LOC 17	640/24	494 (500-½)	640/50	494 (500-1)
CIRCLING	780-1	634 (700-1)	780-1¾ 634 (700-1¾)	940-2½ 794 (800-2½)

