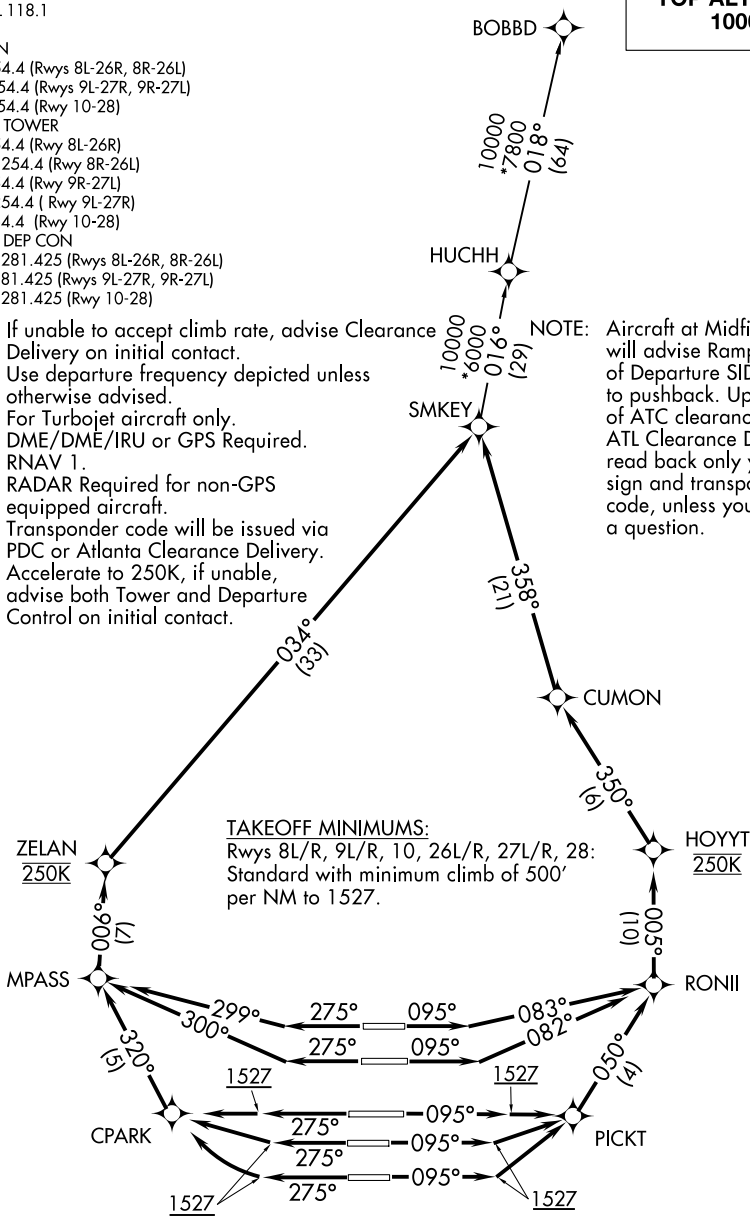


D-ATIS 125.55
CLNC DEL 118.1
CPDLC
GND CON
121.9 254.4 (Rwys 8L-26R, 8R-26L)
121.75 254.4 (Rwys 9L-27R, 9R-27L)
121.65 254.4 (Rwy 10-28)
ATLANTA TOWER
119.1 254.4 (Rwy 8L-26R)
125.325 254.4 (Rwy 8R-26L)
119.3 254.4 (Rwy 9R-27L)
123.85 254.4 (Rwy 9L-27R)
119.5 254.4 (Rwy 10-28)
ATLANTA DEP CON
133.475 281.425 (Rwys 8L-26R, 8R-26L)
125.65 281.425 (Rwys 9L-27R, 9R-27L)
121.225 281.425 (Rwy 10-28)

- NOTE: If unable to accept climb rate, advise Clearance Delivery on initial contact.
- NOTE: Use departure frequency depicted unless otherwise advised.
- NOTE: For Turbojet aircraft only.
- NOTE: DME/DME/IRU or GPS Required.
- NOTE: RNAV 1.
- NOTE: RADAR Required for non-GPS equipped aircraft.
- NOTE: Transponder code will be issued via PDC or Atlanta Clearance Delivery.
- NOTE: Accelerate to 250K, if unable, advise both Tower and Departure Control on initial contact.

TOP ALTITUDE:
10000

NOTE: Aircraft at Midfield Ramps will advise Ramp Towers of Departure SID prior to pushback. Upon receipt of ATC clearance (from ATL Clearance Delivery), read back only your call sign and transponder code, unless you have a question.



SE-4, 07 AUG 2025 to 04 SEP 2025

SE-4, 07 AUG 2025 to 04 SEP 2025