

| | | |
|--|------------------------|--|
| WAAS CH 99300 W08B | APP CRS 095° | Rwy Ldg TDZE 8800 1015 Apt Elev 1026 |
|--|------------------------|--|

RNAV (GPS) Y RWY 8L

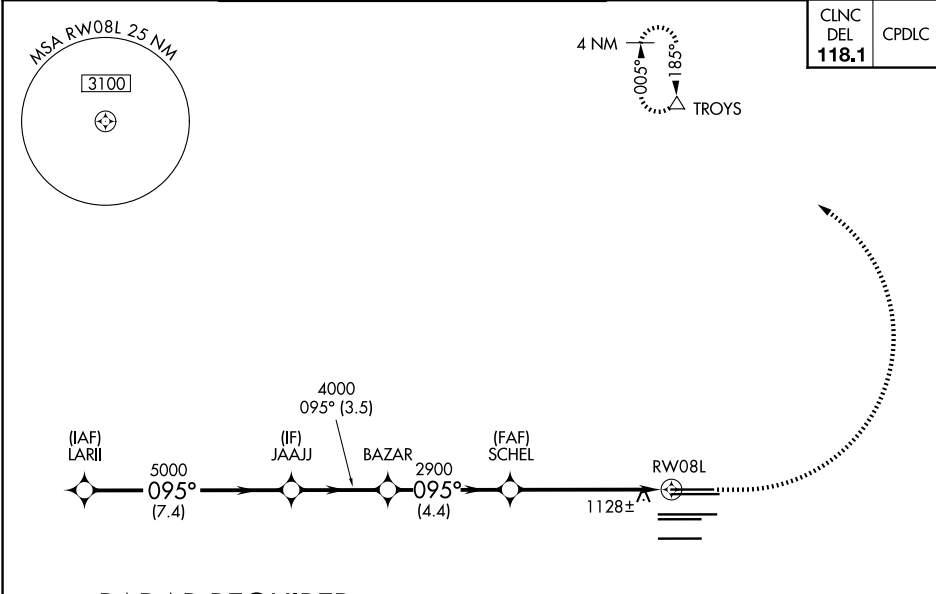
HARTSFIELD/JACKSON ATLANTA INTL (ATL)

⚠ For uncompensated Baro-VNAV systems, LNAV/VNAV NA below -7°C (20°F) or above 54°C (130°F). DME/DME RNP-0.3 NA. For inop ALSF-2, increase LNAV/VNAV all Cats visibility to 1¼ miles. Helicopter visibility reduction below RVR 4000 NA. LNAV procedure NA during simultaneous operations. Simultaneous approach authorized with Rwy 9L or 9R or 10, or Rwy 8L and 10. Use of FD or AP providing RNAV track guidance required during simultaneous operations.

ALSF-2

MISSED APPROACH:
Climb to 1500 then
climbing left turn to
3500 direct TROYS
and hold.

| | | | | | | | | | | |
|--|--|--|--|--|--|--|--|-----------------------------|---|-------------|
| D-ATIS ARR 119.65 DEP 125.55 | ATLANTA APP CON 127.9 379.9 | ATLANTA TOWER 8L-26R 8R-26L 9L-27R 9R-27L 10-28 RWYS 119.1 125.325 123.85 119.3 119.5 254.4 | | | | | | ALL RWYS 121.9 | GND CON (8L-26R,8R-26L) (9L-27R,9R-27L) 10-28 RWYS 121.75 121.65 254.4 | ALL RWYS |
|--|--|--|--|--|--|--|--|-----------------------------|---|-------------|



RADAR REQUIRED

ELEV 1026

TDZE 1015

VGSI and RNAV glidepath not coincident (VGSI Angle 3.00/TCH 70).

*LNAV only.

| | | | | |
|--------------|---------|-------------|-------------|-------------|
| CATEGORY | A | B | C | D |
| LPV DA | | 1215/18 | 200 (200-½) | |
| LNAV/VNAV DA | | 1404/45 | 389 (400-¾) | |
| LNAV MDA | 1460/24 | 445 (500-½) | 1460/45 | 445 (500-¾) |

HIRL all Rwys
TDZ/CL Rwys 8L, 9R,
10, 26R, 27L and 28