

WAAS CH <b>61299</b> <b>W28A</b>	APP CRS <b>275°</b>	Rwy Ldg TDZE <b>998</b> Apt Elev <b>1026</b>
----------------------------------------	------------------------	----------------------------------------------------

RNAV (GPS) Y RWY 28  
HARTSFIELD/JACKSON ATLANTA INTL (ATL)

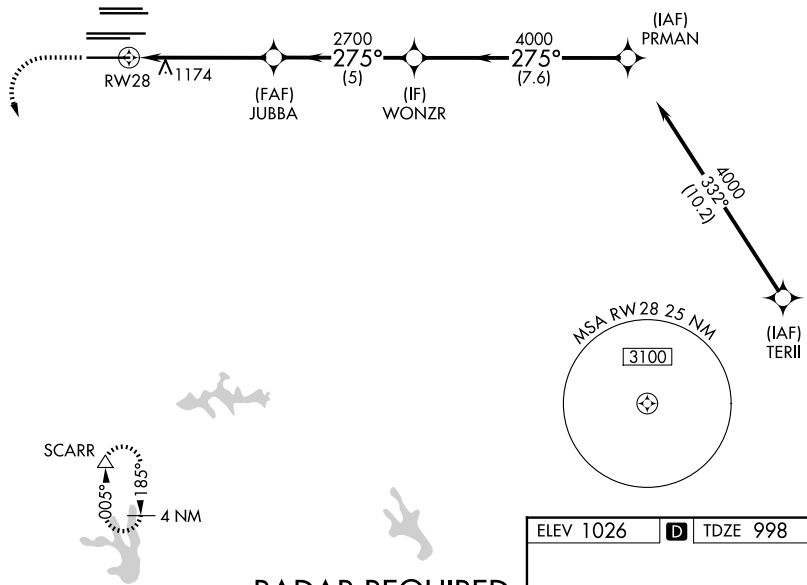
**⚠** For uncompensated Baro-VNAV systems, LNAV/VNAV NA below -7°C (20°F) or above 54°C (130°F). Simultaneous approach authorized with Rwy 26R or 26L or 27R, or Rwys 26R and 27R. DME/DME RNP-0.3 NA. LNAV procedure NA during simultaneous operations. Use of FD or AP providing RNAV track guidance required during simultaneous operations.

ALSF-2

**MISSED APPROACH:**  
Climb to 1500 then climbing left turn to 3000 direct SCARR and hold.

D-ATIS	ATLANTA	ATLANTA TOWER					ALL	GND CON			ALL
ARR	APP CON	8L-26R	8R-26L	9L-27R	9R-27L	10-28	RWYS	(8L-26R,8R-26L)	(9L-27R,9R-27L)	10-28	RWYS
DEP <b>125.55</b>	<b>127.9 379.9</b>	<b>119.1</b>	<b>125.325</b>	<b>123.85</b>	<b>119.3</b>	<b>119.5</b>	<b>254.4</b>	<b>121.9</b>	<b>121.75</b>	<b>121.65</b>	<b>254.4</b>

CINC	DEL	CPDLC
<b>118.1</b>		



**RADAR REQUIRED**

<div>1500</div> <div>3000</div>		<div>SCARR</div> <div>△</div>		
<div>*LNAV only.</div>				
<div><div><div><div><div><div></div><div>1.2 NM</div><div>4 NM</div><div>5 NM</div><div>7.6 NM</div></div><div><div>1.2 NM to RW28</div><div>2700</div><div>4000</div><div>2700</div><div>4000</div></div><div><div>GP 3.00°</div><div>TCH 57°</div></div></div><div><div>1500</div><div>3000</div></div><div><div>SCARR</div><div>△</div></div><div><div>JUBBA</div><div>WONZR</div><div>PRMAN</div></div><div><div>2700</div><div>4000</div><div>275°</div><div>4000</div></div></div></div></div>				
CATEGORY	A	B	C	D
LPV DA	1198/18		200 (200-½)	
LNAV/VNAV DA	1250/24		252 (300-½)	
LNAV MDA	1440/24	442 (500-½)	1440/45	442 (500-¾)

ELEV 1026 **D** TDZE 998

**HIRL all Rwys**  
TDZ/CL Rwys 8L, 9R, 10, 26R, 27L and 28