

ATLANTA, GEORGIA

AL-26 (FAA)

25219

RNAV (GPS) PRM Y RWY 28  
(SIMULTANEOUS CLOSE PARALLEL)  
HARTSFIELD/JACKSON ATLANTA INTL (ATL)

WAAS CH <b>61299</b> <b>W28A</b>	APP CRS <b>275°</b>	Rwy Ldg TDZE <b>998</b> Apt Elev <b>1026</b>
--	------------------------	--

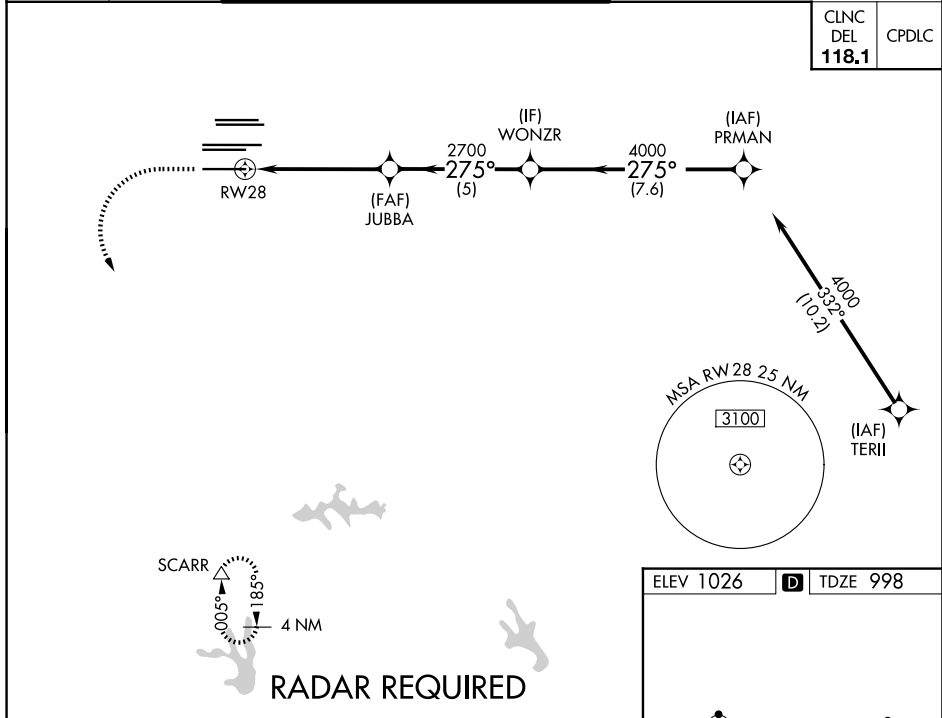
For uncompensated Baro-VNAV systems, LNAV/VNAV NA below -7°C (20°F) or above 54°C (130°F). DME/DME RNP-0.3 NA. Simultaneous close parallel approach authorized with ILS PRM and RNAV PRM Rwy 26R or 26L or 27R or 27L, or Rwy 26R and 27R, or Rwy 26R and 27L, or Rwy 26L and 27R, or Rwy 26L and 27L. Use of FD or AP providing RNAV track guidance required during simultaneous operations. Dual VHF Comm required. See additional requirements on AAUP.

ALSF-2

MISSED APPROACH: Climb to 1500 then climbing left turn to 3000 direct SCARR and hold.

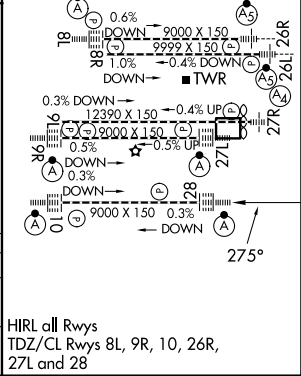
D-ATIS ARR <b>119.65</b> DEP <b>125.55</b>	ATLANTA APP CON <b>127.9 379.9</b>	ATLANTA TOWER 8L-26R 8R-26L 9L-27R 9R-27L 10-28 RWYS <b>119.1 125.325 123.85 119.3 119.5 254.4</b> <b>PRM 133.425</b>	ALL RWYS <b>121.9 121.75 121.65 254.4</b>	GND CON 10-28 <b>121.65</b>	ALL RWYS <b>254.4</b>
--	--	--	---	-----------------------------------	-----------------------------

CLNC DEL <b>118.1</b>	CPDLC
-----------------------------	-------



ELEV 1026	TDZE 998
-----------	----------

1500	3000	SCARR				
↑	↖	△				
			JUBBA	WONZR	PRMAN	
			2700	4000	4000	
RW28			2700	275°	GP 3.00° TCH 57	
5.2 NM			5 NM	7.6 NM		
CATEGORY	A		B	C	D	
LPV	DA	1198/18		200 (200-½)		
LNAV/ VNAV	DA	1250/24		252 (300-½)		



ATLANTA, GEORGIA  
Orig-A 12OCT17

33°38'N-84°26'W

HARTSFIELD/JACKSON ATLANTA INTL (ATL)

RNAV (GPS) PRM Y RWY 28 (SIMULTANEOUS CLOSE PARALLEL)

SE-4, 07 AUG 2025 to 04 SEP 2025