




ATLANTA, GEORGIA

AL-26 (FAA)

RNAV (GPS) PRM RWY 9R  
(SIMULTANEOUS CLOSE PARALLEL)  
HARTSFIELD/JACKSON ATLANTA INTL (ATL)

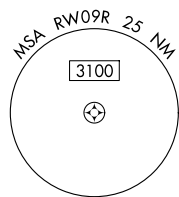
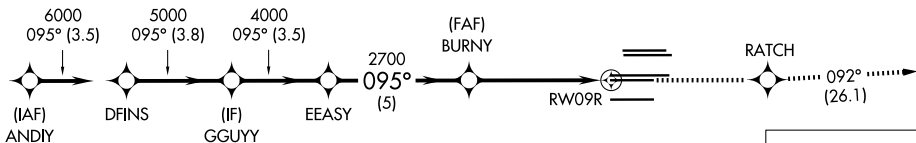
WAAS CH <b>97400</b> <b>W09B</b>	APP CRS <b>095°</b>	Rwy Ldg <b>9000</b> TDZE <b>1026</b> Apt Elev <b>1026</b>
--	------------------------	---

 	<p>For uncompensated Baro-VNAV systems, LNAV/VNAV NA below -7°C (20°F) or above 54°C (130°F). DME/DME RNP-0.3 NA. Simultaneous close parallel approach authorized with ILS PRM and RNAV PRM Rwy 8L or 8R or 10, or Rwy 8L and 10, or Rwy 8R and 10. Dual VHF comm required. See additional requirements on AAUP. Use of FD or AP providing RNAV track guidance required during simultaneous operations.</p>		<p><b>MISSED APPROACH:</b> Climb to 4000 direct RATCH and on track 092° to CONNI and hold.</p>
--	---	---	--

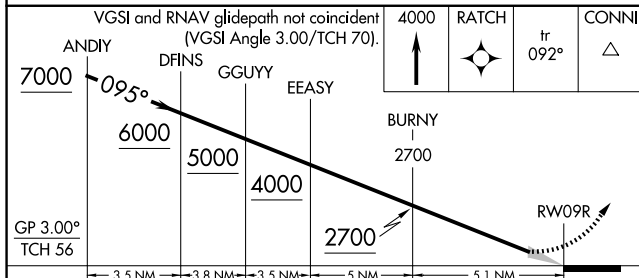
D-ATIS	ATLANTA	ATLANTA TOWER						ALL	GND CON				ALL
ARR 119.65	APP CON	8L-26R	8R-26L	9L-27R	9R-27L	10-28	RWYS		(8L-26R,8R-26L)	(9L-27R,9R-27L)	10-28	RWYS	
DEP 125.55	127.9 379.9	119.1	125.325	123.85	119.3	119.5	254.4		121.9	121.75	121.65	254.4	
		PRM 132.55											

## RADAR REQUIRED

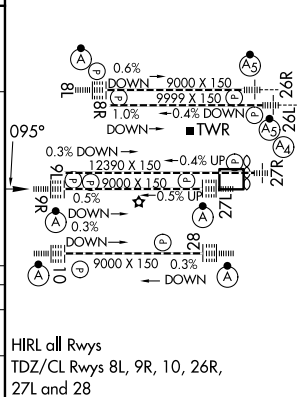
CLNC DEL <b>118.1</b>	CPDLC
-----------------------------	-------



ELEV	1026	<b>D</b>	TDZE	1026
------	------	----------	------	------



CATEGORY		A	B	C	D
LPV	DA	1226/18		200 (200-½)	
INAV/ VNAV	DA	1403/40		377 (400-¾)	



ATLANTA, GEORGIA  
Orig-A 12OCT17

33°38'N-84°26'W

HARTSFIELD/JACKSON ATLANTA INTL (ATL)

RNAV (GPS) PRM RWY 9R (SIMULTANEOUS CLOSE PARALLEL)

SE-4, 07 AUG 2025 to 04 SEP 2025

SE-4, 07 AUG 2025 to 04 SEP 2025